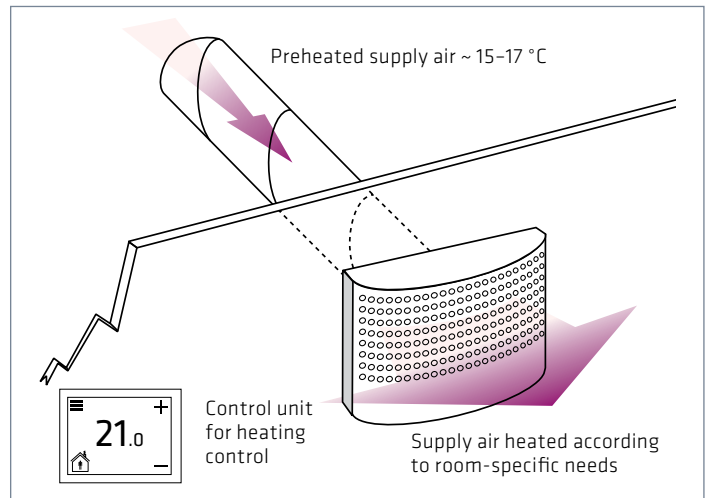


Instructions ECO

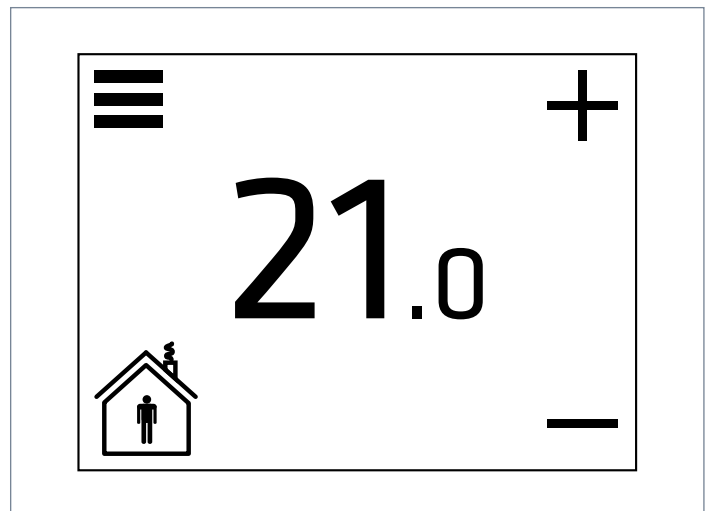
ECO air heaters control the room temperature. The system includes a controller and supply air device(s). Usually, each room has a separate system.

The controller measures the room temperature and controls the radiator in the supply air device based on the measurements.



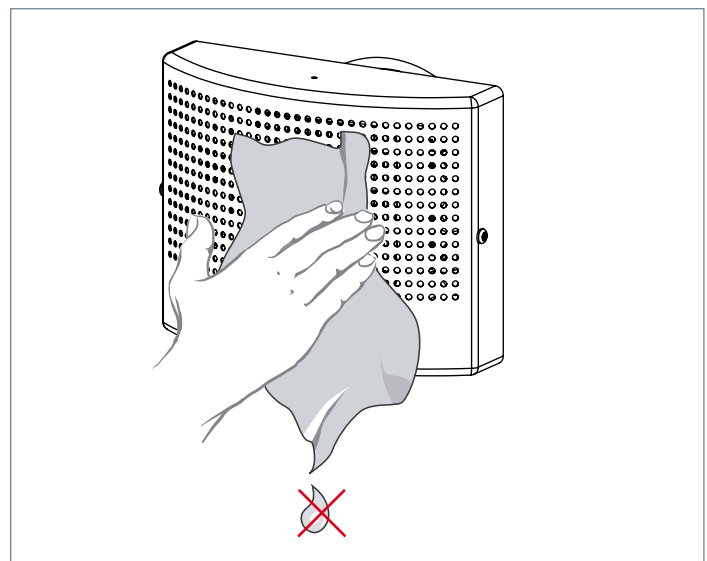
The temperature can be adjusted with the plus and minus buttons on the touch screen. To activate the Away mode, press the Away symbol. The Away temperature can be adjusted with the plus and minus buttons when the Away mode is active. 🏠

When the heating is on, the screen's red background color is activated.



Maintenance

NOTE! Always de-energize the system for maintenance. You can wipe dust off the supply air device, if necessary. Do not use a wet cloth because the device contains live components.



WARNING!

The supply air device carries a voltage of 230 V.

The maintenance may only be performed by a professional ventilation installer.

This appliance can be used by children aged from 8 years and above and persons with reduced physical, sensory or mental capabilities or lack of experience and knowledge if they have been given supervision or instruction concerning use of the appliance in a safe way and understand the hazards involved. Children shall not play with the appliance. Cleaning and user maintenance shall not be made by children without supervision. Children of less than 3 years should be kept away unless continuously supervised. Children aged from 3 years and less than 8 years shall only

switch on/off the appliance provided that it has been placed or installed in its intended normal operating position and they have been given supervision or instruction concerning use of the appliance in a safe way and understand the hazards involved. Children aged from 3 years and less than 8 years shall not plug in, regulate and clean the appliance or perform user maintenance. CAUTION – Some parts of this product can become very hot and cause burns. Particular attention has to be given where children and vulnerable people are present.