



Application area

Combined window/door switch with integrated radio transmitter, designed for use in Swegon's indoor climate system WISE.

General

All relevant personnel must acquaint themselves with these instructions before beginning work. Any damages to the product or parts of it due to improper handling cannot be considered subject to warranty if this instruction has not been followed correctly. For further information about the WISE, see the relevant documentation at www.swegon.com

The packaging contains the following items:

- 1 x window/door switch
- 1 x Magnet
- 1 x Battery of the type AA Li, 3.6 V (non-rechargeable), (accessories)
- 1 x Screw TX6 (for locking the front-piece on the back-piece)
- 1 x Instructions for use

Electrical safety

Only a qualified electrician or service personnel trained by Swegon are permitted to carry out any work on the electrical installation or connection of products to the system. Always follow local/national rules for who shall be permitted to carry out this type of electrical installation.

Note the supplied battery is not rechargeable.

Installation

Check to make sure that the product does not have any visible defects.

Do not block the ventilation openings on the product.

Install the back-piece in the window/door frame, the magnet is mounted on the door/window, with the straight side against one long side of the window/door switch, see figures 1, 4a and 4b.

The front-piece must be stored in its ESD packaging until it is to be mounted.

Insert the battery, as shown in figure 2.

Mount the front-piece on the back-piece, see figure 3b.

If necessary use the supplied screw when refitting, see figure 3b.

Check that the product is properly fitted in place after installation.

Use TuneWISE for commissioning. Commissioning must be performed by qualified and trained WISE service engineers.

Use

LED, permanent white light: the product is in pairing mode.

Trouble shooting

Make sure that the product is energized. Check the polarity of the battery (+/-).

Cleaning

If necessary, use a dry cloth when cleaning. Never use water, detergent, cleaning solvent or a vacuum cleaner.

Service/maintenance

Power fed via battery, the service interval for battery replacement is calculated to approximately 5 years. See figure 3a/3b for battery replacement.

If you suspect that the product has some defect, please contact Swegon.

Disposal

Must be handled according to local regulations.

Warranty

The warranty or service agreement will not be in effect/will not be extended if: (1) the product is repaired, modified or changed, unless such repair, modification or change has been approved by Swegon AB; or (2) the serial number on the product has been made illegible or is missing.

Technical data

| | |
|-----------------------|---|
| Power consumption: | 240 mAh/year |
| Battery: | 1 of the type AA, LiSOCl ₂ of 3.6 V (Li) |
| Frequency band: | 2.45 GHz, IMS band (2400--2483 MHz) |
| Output (ERP): | 50 mW |
| Range of measurement: | |
| Temperature: | 0 – 50°C ± 0.5°C |
| IP class: | IP31 |
| Material: | Front-piece PC, Back-piece: PP |
| Colour: | Front-piece NCS S1002-Y, Back-piece: NCS S5500-N |
| Ambient temperature: | Operating: 0 – + 55°C, Storage: -40 – +80°C |
| RH: | 10 – 95% non-condensing |
| Weight: | With battery: 58 g, Without battery: 40 g, Magnet: 50 g |
| Dimensions | |
| Sensor: | W32 x H95 x D26 mm |
| Magnet: | W12 x H58 x D15 mm |

Declaration of Conformity



Swegon AB hereby declares that the radio equipment WISE WCS conforms with the Directive 2014/53/EU and Directive 2011/65/EU.

The complete EU Declaration of Conformity is available at Swegon's website: www.swegon.com.

This declaration is applicable only if the product has been installed according to the instructions in this document and if no changes have been made on this product.

Distance between sensor and magnet 3-20 mm

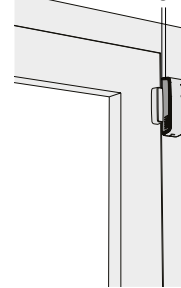


Figure 1. Recommended placement of WISE WCS.

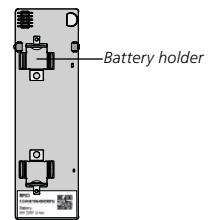


Figure 2. Circuit card.

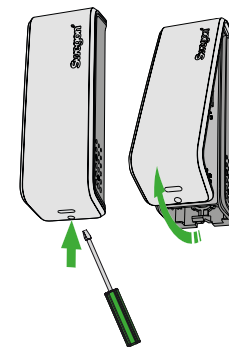


Figure 3a. Remove the front-piece. Always dismantle the product in this direction.

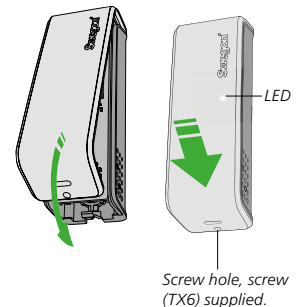


Figure 3b. Fit the front-piece. Always install the product in this direction.

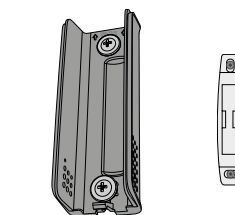


Figure 4a. Installation.

1. The back-piece is mounted vertically or horizontally on the window/door frame, screw max. Ø4.5 mm, min. length 20 mm, screws not supplied.

2. The magnet is mounted on the window/door, screw max. Ø3.2 mm, min. length 15 mm, screws not supplied.

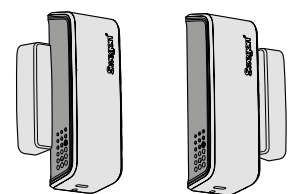


Figure 4b.

The magnet is mounted with the straight side towards the one of the product's long sides.