

# SLI

## ADJUSTABLE STUCCO SLOT DIFFUSER WITHOUT FLANGE



### VARIANTS

#### SLI

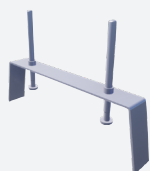
The adjustable slot diffuser type SLI is suitable for the supply and exhaust of cooled and heated air. It's equipped with a plasterkit for frameless embedding. Each slot is individually adjustable and is equipped with 2 specially designed discrete deflectors. This results in an ideal air flow pattern that can be adjusted by 180° (vertical and horizontal air flow). Available in several lengths, and in multiple middle and end sections to create a linear diffuser up to any length.

Equipped with a plasterkit for frameless embedding

Sleek design with discrete aluminium deflectors (Slot width 25mm)

Wide temperature range for both heating and cooling

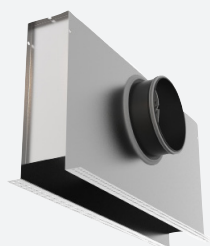
### ACCESSORIES



SPS0



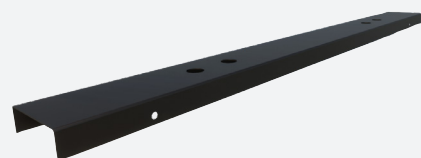
SL000



SPI



SPS



BOBSL



CEILING



3 WAY THROW



2 WAY THROW



1 WAY THROW



LINEAR



SUPPLY



EXHAUST



ADJUSTABLE



LINEAR

### TECHNICAL INFORMATION

APPLICATION	Airflow direction	Lateral, axial, adjustable
	Airflow type	Linear, exhaust or supply
CONSTRUCTION	Shape	Linear
	Min. Length	300mm
	Max. length	2000mm
	Available steps in length	1mm
	Number of slots	1,2,3,4
	Flange size	0mm
	Slot width	25mm
	Installation depth	34mm
MATERIAL	Standard material	Extruded aluminium
	Standard finishing	Satin anodized 11µm
	Product finishing options	Powder coating RAL
	Deflectors	Powder coated extruded aluminium
	Deflector fixation piece	POM
MOUNTING	Mounting options	Frameless, plasterkit for embedding
PLENUM	Material	Galvanised (275g/m²) steel sheet, PP/TPE spigot
	Optional insulation	Melamine 6mm
	Spigot	Class D spigot with double lip seal
	Volume control	Optional perforated volume flow control disk inside the spigot
	Mounting options	Mounting eyes (Ø7mm) standard, mounting brackets available upon request

### QUICK SELECTION

Supply Qv [m³/h]		L [mm]			
	Lw	600	1000	1500	2000
SLI-1	25 dB(A)	64	99	138	174
	35 dB(A)	91	140	195	246
SLI-2	25 dB(A)	137	212	296	374
	35 dB(A)	192	296	414	524
SLI-3	25 dB(A)	166	256	356	450
	35 dB(A)	235	362	504	637
SLI-4	25 dB(A)	206	320	449	569
	35 dB(A)	286	442	619	786

### EFFECTIVE AIR DISCHARGE AREA

Supply A <sub>k</sub> [m²/m]	SLI-1	SLI-2	SLI-3	SLI-4
	0.0152	0.0246	0.0339	0.0432

## PRODUCT KEY

STUCCO SLOT DIFFUSER SLI										
S	L	I	1	2	-	-	1	2	0	0
							Slot length L (mm): From 300 to 2000mm, per 1mm			
							-: Naturel anodised F: Coated			
							-: Standard E: End piece M: Intermediate piece			
							1: 1 slot (1 to 4 slots)			
			0: Without deflectors, without spacers 1: Black deflectors RAL9005 MATT, black spacers 2: White deflectors RAL9010, white spacers 3: White deflectors RAL9016 MATT, white spacers 4: White deflectors RAL9003 MATT, white spacers 5: Deflectors painted in color by choice, black spacers 6: Deflectors painted in color by choice, white spacers							

PLENUM SPS WITH MOUNTING BRACKETS (MOUNTING BRACKETS+SCREWS INCLUDED) FOR STUCCO SLOT DIFFUSER SLI																	
S	P	S	0	2	-	S	-	-	0	0	1	6	0	1	2	0	0
											Nominal diameter (mm): 80, 100, 125, 160, 200, 250, or 315		Slot length L (mm): From 300 to 2000mm, per 1mm				
											Slot length <=1200: 1 diameter Slot length >=1201: 2 diameters						
											0: without mounting straps 1: with mounting straps						
											- : without damper D : with damper						
											-: non insulated plenum G: insulated plenum H: half insulated plenum						
											S: Side connection						
											-: Standard M: Intermediate piece L: End piece left (looking at plenum front into the inlet of the connection collar) R: End piece right (looking at plenum front into the inlet of the connection collar)						
											1: 1 slot (1 to 4 slots)						

## PRODUCT KEY

## SLOT DIFFUSER SLB WITH STUCCO PLENUM SPI (MOUNTED)

S	L	I	1	2	-	-	S	-	-	0	1	2	0	0
											Slot length L (mm): From 300 to 2000mm, per 1mm			
											0: Without mounting straps 1: With mounting straps			
											-: Without damper D: With damper			
											-: Non insulated plenum G: Insulated plenum H: Half insulated plenum			
											S: Side connection			
											-: Naturel anodised F: Coated			
											-: Standard L: End piece left (looking at plenum front into the inlet of the connection collar) M: Intermediate piece R: End piece right (looking at plenum front into the inlet of the connection collar)			
											1: 1 slot (1 to 4 slots)			
											0: Without deflectors, without spacers 1: Black deflectors RAL9005 MATT, black spacers 2: White deflectors RAL9010, white spacers 3: White deflectors RAL9016 MATT, white spacers 4: White deflectors RAL9003 MATT, white spacers 5: Deflectors painted in color by choice, black spacers 6: Deflectors painted in color by choice, white spacers			

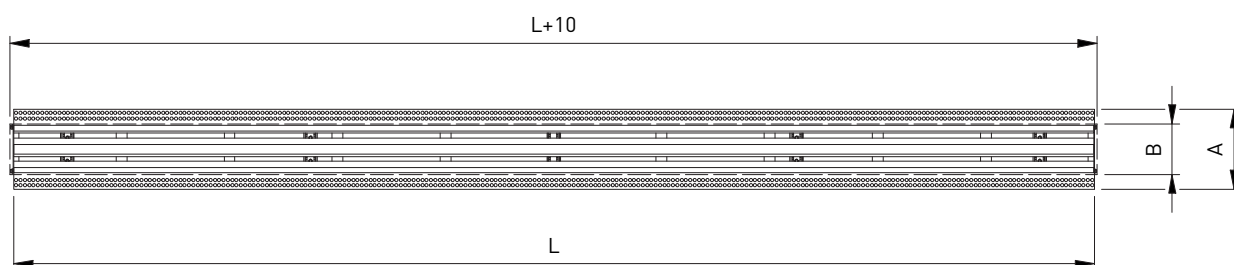
## DUMMY PLATE BOBSL FOR STUCCO SLOT DIFFUSER SLI (DIRECT MOUNTING)

B	0	B	S	L	0	2	1	2	0	0
							Length dummy plate (mm): From 20 to 2000mm, per 1mm			
							1: 1 slot (1 to 4 slots)			

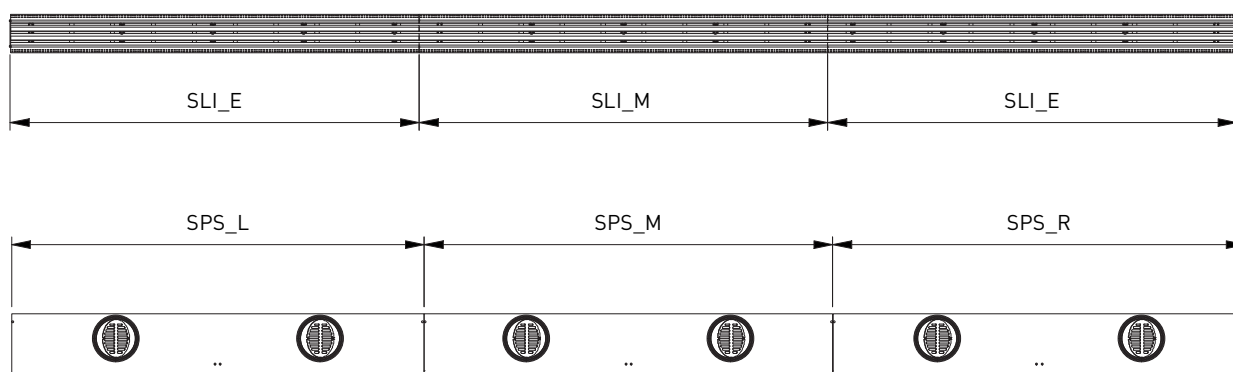
## MOUNTING BRACKET SL FOR CEILING MOUNTING STUCCO SLOT DIFFUSER SLI (WITHOUT PLENUM)

S	L	0	0	2
				1: 1 slot (1 to 4 slots) Slot length <=1200: 2 brackets Slot length >=1201: 3 brackets

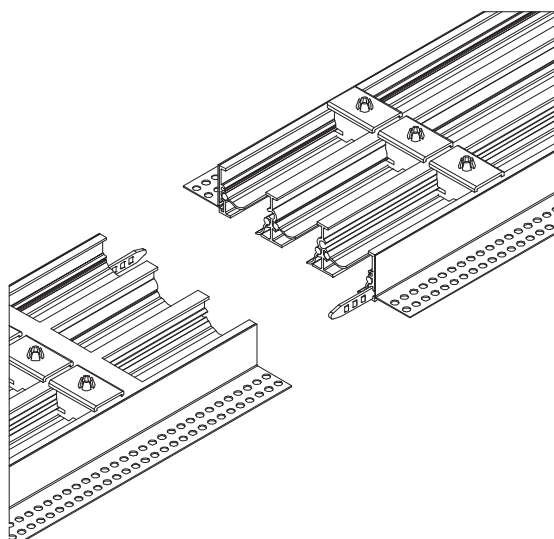
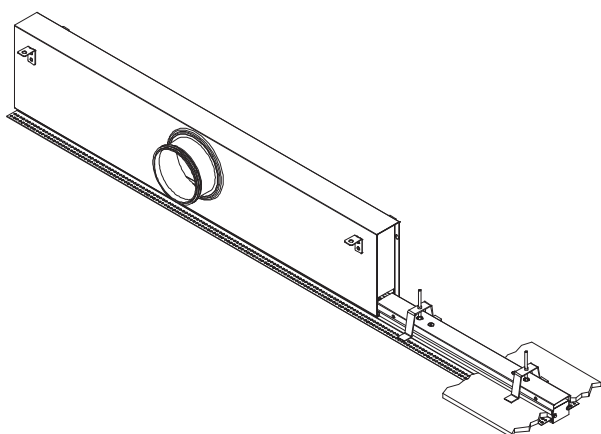
## SLI

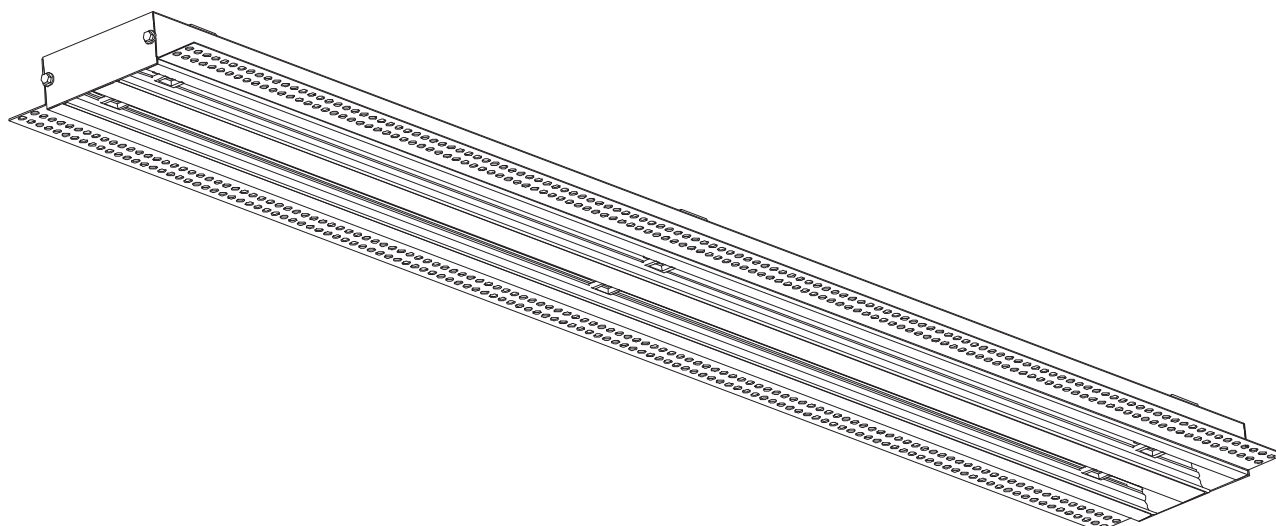
CEILING OPENING:  $L+10 \times B$ 

## LINEAR: END PIECES AND INTERMEDIATE PIECES

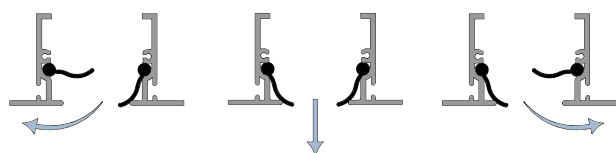


SLI11-F/1500  
+ SPS01LS--1/125/1000  
+ BOBSL01/500  
+ SL001 (2x)

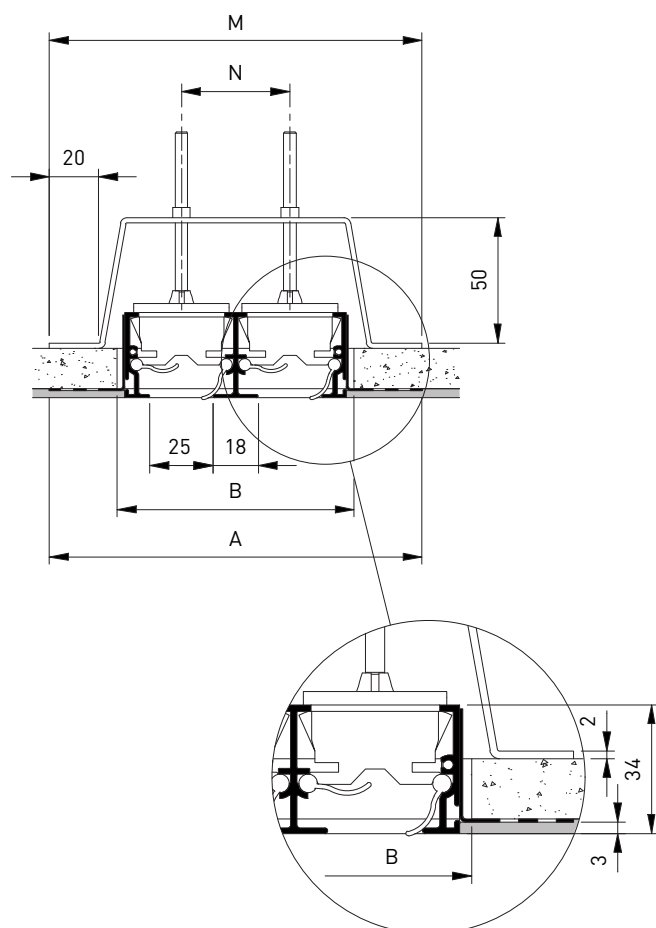




AIRFLOW DIRECTION



## SLI12 + SL002



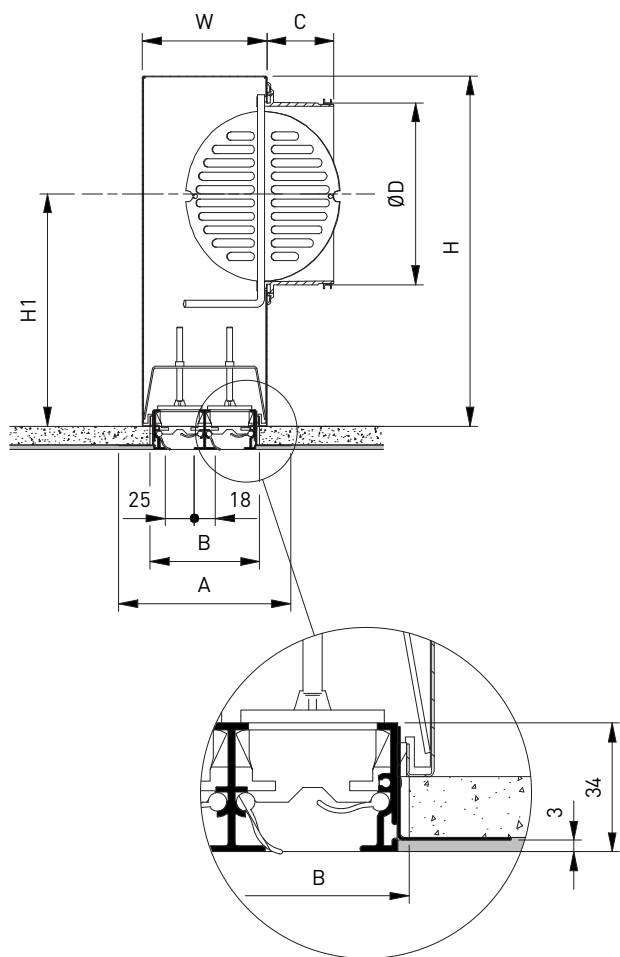
## DIMENSIONS

	Number of slots - SLI			
	1	2	3	4
<b>A</b>	105	148	191	234
<b>B</b>	51	92	137	180
<b>M</b>	105	148	191	234
<b>N</b>	0	43	86	129

All dimensions in mm

L ≤ 1200: number of brackets = 2

L ≥ 1201: number of brackets = 3

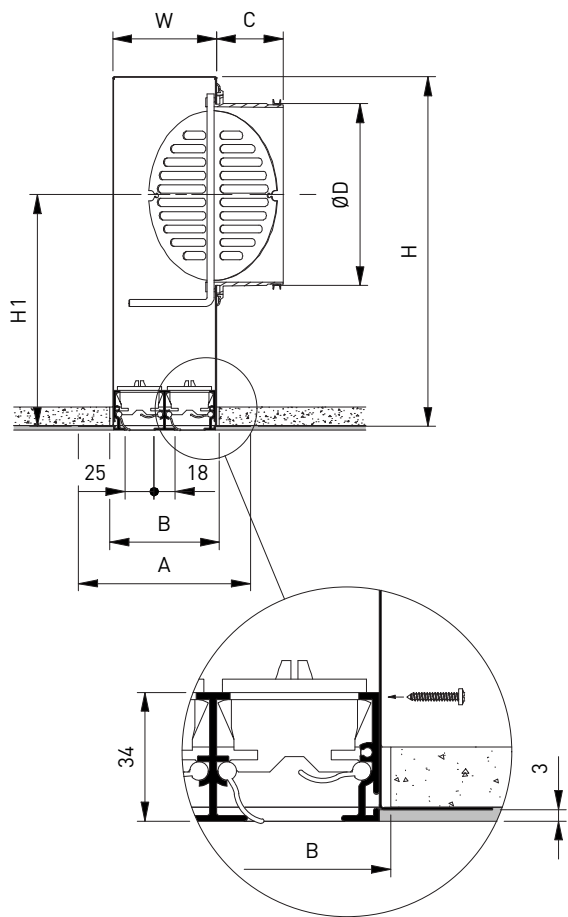


DIMENSIONS

	Number of slots - SLI + SPS			
	1	2	3	4
A	105	148	191	234
B	51	92	137	180
C	58	58	58	58
ØD	125	160	200	200
H	200	250	300	300
H1	118	150	180	180
W	63	106	149	192

All dimensions in mm  
L <= 1200: 1 diameter  
L >= 1201: 2 diameters

SLB + SPI



DIMENSIONS

	Number of slots - SLB + SPI			
	1	2	3	4
A	105	148	191	234
B	49	92	135	178
C	58	58	58	58
ØD	125	160	200	200
H	205	255	305	305
H1	123	155	185	185
W	46	89	132	175

All dimensions in mm  
L <= 1200: 1 diameter  
L >= 1201: 2 diameters

