

# GLOBAL PX

High efficiency double flow ventilation unit with high efficiency heat recovery

## DISASSEMBLY/ASSEMBLY MANUAL



## MAIN TOOLS



- Drilling machine
- Screw machine
- Socket of 7 mm and 8mm
- Torx tx30 screw bit
- Drill of 4,2mm
- Flat and cross-headed screwdriver
- Plastic clamp ring
- Wire cutter

### 1. WITHDRAW DOORS AND PANELS (SEE STEP 2 FOR CONTROL BOX PANEL BEFORE!)



1. First, withdraw the screws out of the doors.
2. Unclip the black hinges with a cutter.  
Note: Once the doors are removed, put back together the clips of the hinges.
3. Put numbers on the doors, corners, and profilings for reference.



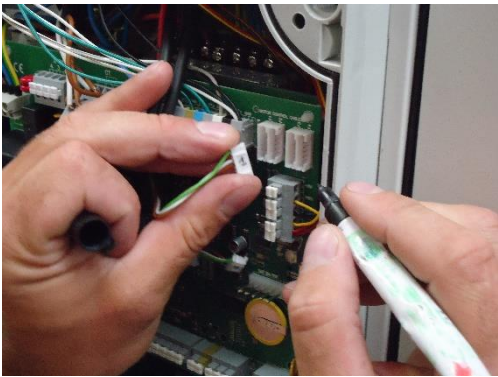
### 2. CONTROLS

For this step, please let the door with the control box attached to the device.



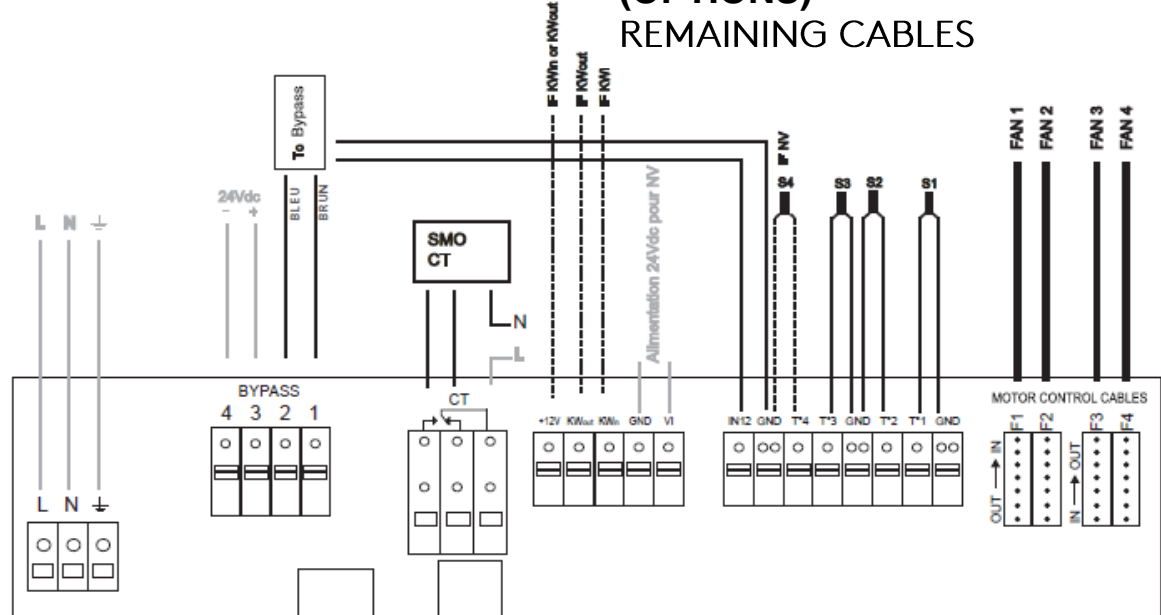
Take off the 4 plastic screws with a flat screwdriver.

Unplug control cables of the fans (F1, F3), temperature sensors (T1, T2, T3), eventual kit CA cables (PR1, PR2, 12V, GND) and on the eventual other option cables.



Advise: put numbers on the control cables (F1, F3), sensor tubes (T1, T2, T3), and on the eventual option cables.

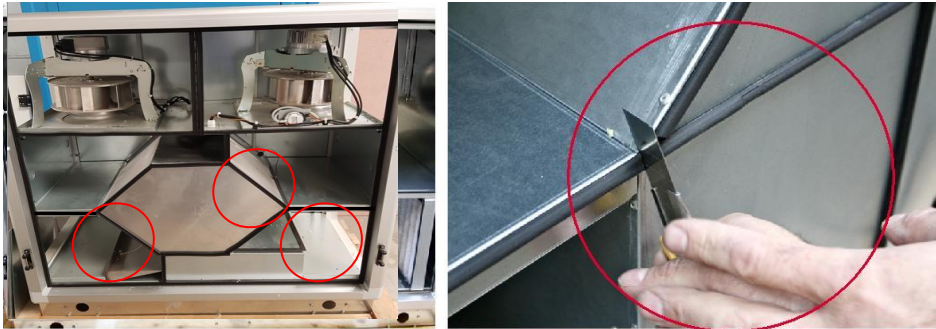
**CABLES TO BE REMOVED**  
**EVENTUAL CABLES TO BE REMOVED**  
**(OPTIONS)**  
**REMAINING CABLES**



**CABLES RETIRÉS**  
**CABLES RETIRÉS DES OPTIONS**  
**CABLES RESTANTS**

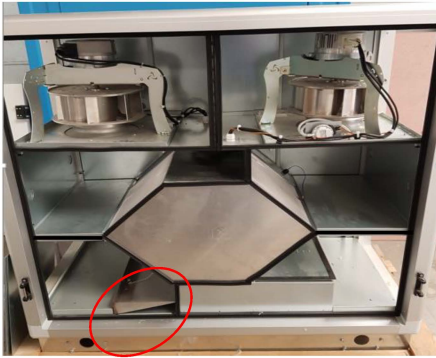
**CENTRALE:**  
**16X70**

**3. CUT THE RUBBER JOINTS AROUND THE HEAT EXCHANGER BLOCK**



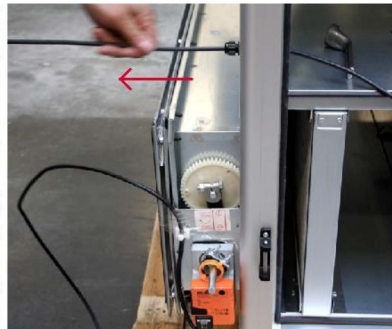


#### 4. WITHDRAW THE CONDENSATE TRAY

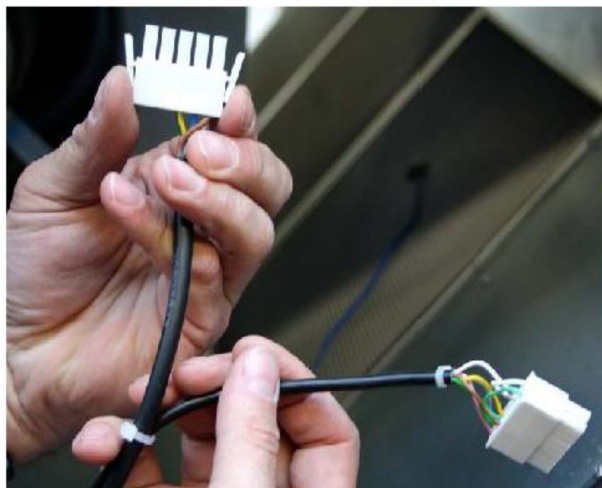


FLAP VALVE:  
SCREWS 4,8 X 19  
HEXAGONAL HEAD

#### 5. IF OPTION « CT IN »: REMOVE THE SERVO-MOTOR CABLES AND WITHDRAW THE FLAP VALVES



#### 6. DISCONNECT THE FANS CABLES *For GLOBAL PX 800,1200, 2000 & 3000 :*



or GLOBAL PX 4000, 5000 & 6000 :



1. Remove the fan from the unit (see step 7 & 8)
2. Remove the 4 screws of the motor control cover.
3. Remove the power and control cables.

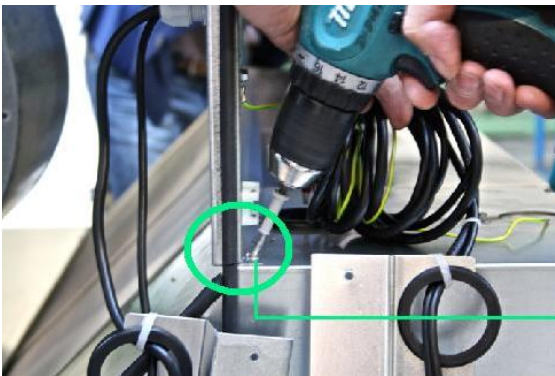
Advise: mark each wire of the control cable to replace them at the right place for the re-wiring.

## 7. UNMOUNT THE TWO FANS



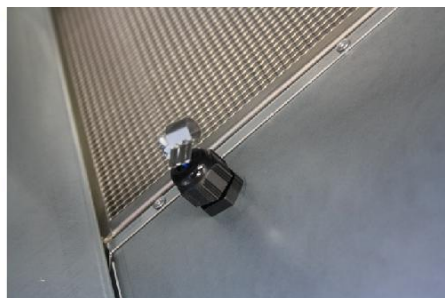
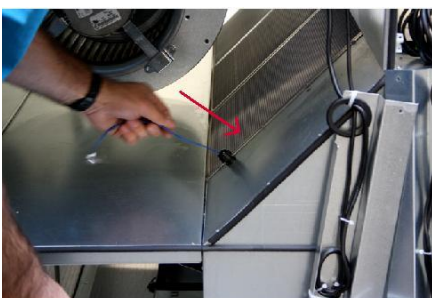
1. Remove the 4 screws on each fan supporting plate
2. (If option kit CA) Remove electrical cables from the pressure sensor
3. Remove the fans together with the supporting plate

## 8. UNMOUNT THE UPPER VERTICAL SEPARATION METAL SHEET

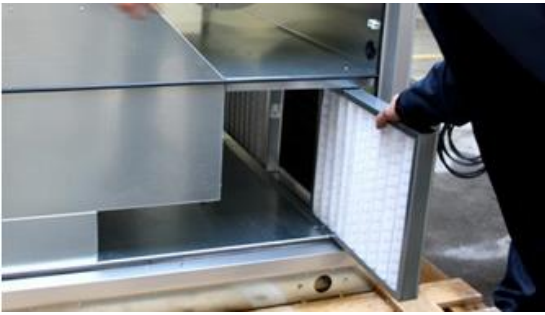


Rivets 3.9-10

## 9. UNMOUNT THE TEMPERATURE SENSORS



## 10. REMOVE THE FILTERS



Leave the middle(s) filter(s) in order to support the horizontal metal sheets of separation. In case of one or two filter, let them in place.

## 11. REMOVE PANELS BETWEEN SUPPLY/EXHAUST AND OUTDOOR/EXTRACT AIR SIDES



Remark : fans and eventual CTm are supposed to be already unmounted.

1. Drill the screws and rivets on the pre-painted steel panel and remove it
2. Drill the screws and rivets on the galvanized steel panel and remove it
3. To extract the horizontal metal sheet supporting the fans, drill the last rivets.

## 12. IF KWIN OPTION: REMOVE THE ELECTRICAL PRE-HEATING BATTERY



## 13. IF KWOUT OR NV OPTION: REMOVE THE POST-HEATING BATTERY

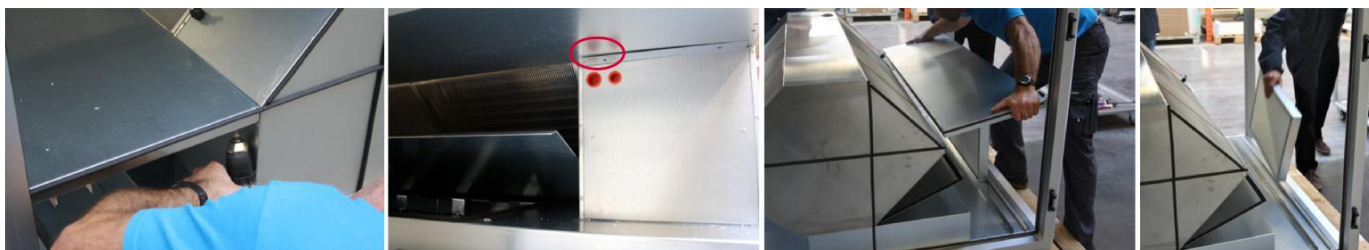




## 14. REMOVE THE HORIZONTAL SEPARATION METAL SHEETS



1. Withdraw the strengthenings



2. Drill the rivets maintaining the metal sheet of separation

3. Withdraw the 2 metal sheets of separation.

## 15. REMOVE THE HEAT EXCHANGERS



**Warning** : the aluminium blades are fragile. Please handle it properly.

## 16. REMOVE THE BYPASS BLOCK



## 17. DRILL THE RIVETS OF THE UPRIGHTS, REMOVE THE UPPER PART AND THE UPRIGHTS



RIVETS  
3,9 - 10

# NOTICE

To rebuild the unit, follow the disassembly manual in reverse.

Be careful to ensure the impermeability by using silicone.

The silicone's location is underlined in red in the view here after. The application of silicone has to be made STEP BY STEP throughout the assembly steps.

