



RESIDENTIAL VENTILATION

Swegon CASA cooker hoods

Swegon CASA cooker hoods

Cooker hoods have essential role in the residential indoor quality, because they remove odours, fumes, heat, humidity and airborne grease that are created in kitchen during cooking. Swegon CASA cooker hoods are designed for excellent odour removal with indoor air quality as the highest priority.

Swegon CASA cooker hoods remove cooking fumes, heat and excess humidity outside the building - they don't recirculate cooking air back indoors. Different hood models can be connected directly to central, decentral or extract ventilation system or to a separate roof fan. When connected to ventilation system there is no need for a separate fan or ducting for the kitchen hood. Cooker hood that use fan in the ventilation system create also less sound than fans located inside the kitchen hood. Furthermore, when cooking fumes are removed outside the extracted air needs to be replaced with new fresh air. When cooker hood is connected to Swegon ventilation system this compensation can be handled automatically in both central and decentral ventilation.

Swegon CASA cooker hoods have excellent odour catching capacity tested according to EN standards. This means they can remove more odours with lower air flow. This enables better air quality with less fan power, less energy consumption and lower sound level.

- Removes cooking odours outside the building - doesn't recirculate cooking air back indoors
- Efficient odour removal even with low air volume
- Automatic balancing to avoid pressure difference



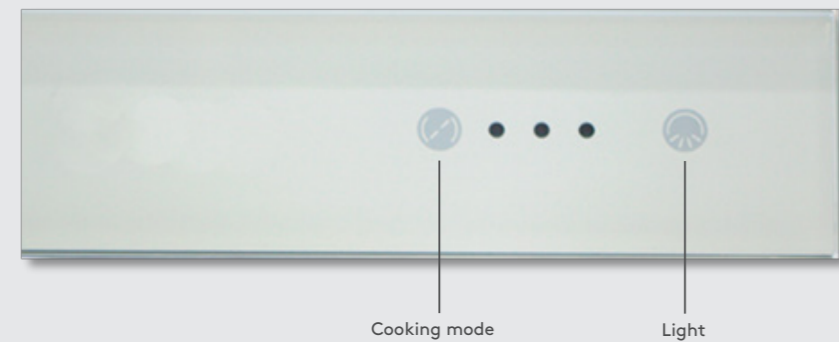
CASA GENIUS / SMART

Cooker hood for controlling Swegon CASA ventilation units or external fans



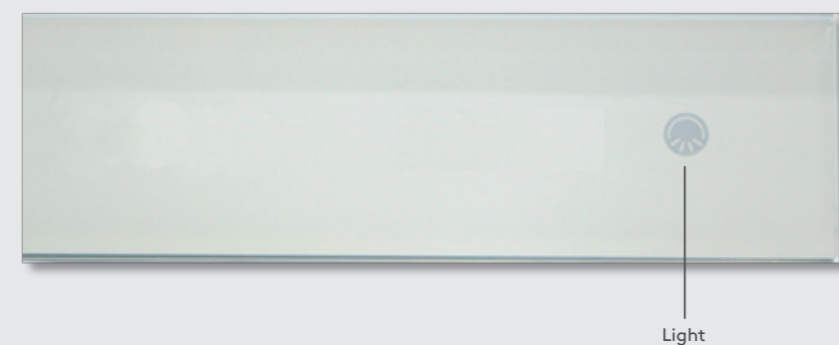
CASA CENTRAL

Cooker hood for centralized ventilation systems



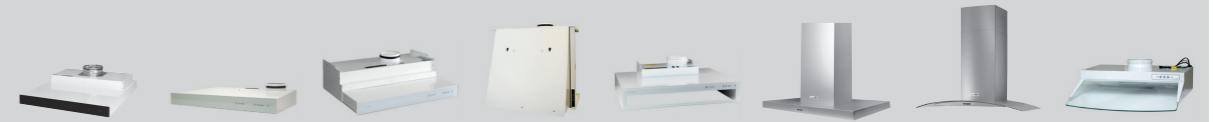
CASA FREEFLOW

Cooker hoods for old constant air flow extract ventilation systems



GENIUS / SMART

Cooker hoods for controlling Swegon CASA ventilation units or external fans



- Standard equipment
- Accessories
- * ILVA transformer as an accessory (ITFC)
- Not available

	SAMBA	JAZZ	SALSA	TANGO (70)	BLUES	ROCK	SWING	FUNK
Compatible								
CASA ventilation units	●	●	●	●	●	●	●	●
Centralized systems	—	—	—	—	—	●	●	—
Centralized systems (Free Flow)	—	—	—	—	—	—	—	—
EC roof fans	●	●	●	●	●	●	●	—
AC roof fans (and AHU's)	○*	○*	○*	○*	○*	○*	○*	○*
Width mm	500/600	600	500/600	500/600	500/600	600/900 on a wall 900 over the kitchen island	600/900 on a wall 900 over the kitchen island	500/600
Height of front panel mm	52	64	64	560 (699) mm	105	60	50	115
Depth mm	518	525	525	295/490	525	490 on a wall 650 over the kitchen island	490 on a wall 650 over the kitchen island	520
Power connection	Mains adapter	Mains adapter	Mains adapter	Mains adapter	Mains adapter	Mains adapter	Mains adapter	Plug
Colour (frame/ front glass)	White/ silver/ black	White/ stainless steel	White/ white White/ black Silver/ black	White	White/ stainless steel	Stainless steel	Stainless steel	White/ stainless steel (no 500mm)
Lighting	LED (4000K)	LED (4000K)	LED (4000K)	LED (4000K)	LED (4000K)	LED	LED	LED (4000K)
Control panel	Capacitive touch screen	Capacitive touch screen	Capacitive touch screen	Buttons	Capacitive touch screen	Buttons	Buttons	Buttons
Grease filter	2 metal filters	2 stainless steel filters	1 stainless steel filter	2 (3) stainless steel filters	2 stainless steel filters	2-3 stainless steel filters	2-3 stainless steel filters	1 stainless steel filter
Damper	●	●	●	●	●	●	●	●
Electronic timer	●	●	●	●	●	●	●	●
Fan speed	3 speeds	3 speeds	3 speeds	3 speeds	3 speeds	3 speeds	3 speeds	3 speeds
Smoke limiter	—	—	○	○	○	—	—	—
Sound attenuator box	—	—	○	—	○	—	—	—
Duct casing	—	—	—	—	○ White/ stainless steel	Stainless steel Wall 760 to 930 mm Kitchen island 760-1010 mm	Stainless steel Wall 760 to 930 mm Kitchen island 760-1010 mm	—
Safer safety technology	○	○	○	○	○ Integrated also with an extinguisher	—	—	—
Safety voltage	●	●	●	●	●	●	●	—
Installation method	Between kitchen cabins	Between kitchen cabins below R2/ R3	Between kitchen cabins	Between kitchen cabins	Between kitchen cabins/ on the wall	On a wall/ over the kitchen island	On a wall/ over the kitchen island	Between kitchen cabins
Provision to control the damper with a separate switch	●	●	●	●	●	●	●	●
Indicating signal for the damper position	●	●	●	●	●	●	●	●

CENTRAL

Cooker hoods for centralized ventilation systems



- Standard equipment
- Accessories
- * ILVA transformer as an accessory (ITFC)
- Not available

	SAMBA	BLUES	SALSA	FUNK	TANGO (70)	FOLK
Compatible	CASA ventilation units	—	—	—	—	—
	Centralized systems	●	●	●	●	●
	Centralized systems (Free Flow)	—	—	—	—	—
	EC roof fans	—	—	—	—	—
	AC roof fans (and AHU's)	—	—	—	—	—
	Width mm	500/600	500/600	500/600	500/600	500/600
Height of front panel mm	52	105	64	115	560 (699) mm	115
Depth mm	518	525	525	520	295/490	520
Power connection	Mains adapter	Mains adapter	Mains adapter	Plug	Mains adapter	Plug
Colour (frame/ front glass)	White/ silver /black	White/ stainless steel	White/white White/black Silver/black	White/ stainless steel (no 500mm)	White	White
Lightning	LED (4000K)	LED (4000K)	LED (4000K)	LED (4000K)	LED (4000K)	LED (4000K)
Control panel	Capacitive touch screen	Capacitive touch screen	Capacitive touch screen	Buttons	Buttons	Buttons
Grease filter	2 stainless steel filters	2 stainless steel filters	1 stainless steel filter	1 stainless steel filter	2 (3) stainless steel filters	1 stainless steel filter
Damper	●	●	●	●	●	●
Electronic timer	●	●	●	●	●	Mechanical
Fan speed	—	—	—	—	—	—
Smoke limiter	●	●	●	●	●	●
Sound attenuator box	●	●	●	●	○	●
Duct casing	—	○ White/ stainless steel	—	—	—	—
Safera safety technology	○	○ Integrated also with an extinguisher	○	—	○	—
Safety voltage	●	●	●	—	●	—
Installation method	Between/under kitchen cabinets	Between kitchen cabins/on the wall	Between kitchen cabins	Between kitchen cabins	Between kitchen cabins	Between kitchen cabins
Provision to control the damper with a separate switch	●	●	●	●	●	—
Indicating signal for the damper position	●	●	●	●	●	●

FREEFLOW

Cooker hoods for old constant air flow extract ventilation systems



- Standard equipment
- Accessories
- * ILVA transformer as an accessory (ITFC)
- Not available

	BLUES FF	TANGO FF (70)	FOLK FF	
Compatible	CASA ventilation units	—	—	—
	Centralized systems	—	—	—
	Centralized systems (Free Flow)	●	●	●
	EC roof fans	—	—	—
	AC roof fans (and AHU's)	—	—	—
	Width mm	500/600	500/600	500/600
Height of front panel mm	105	560 (699) mm	115	
Depth mm	525	295/490	520	
Power connection	Mains adapter	Mains adapter	Plug	
Colour (frame/ front glass)	White	White	White	
Lightning	LED (4000K)	LED (4000K)	LED (4000K)	
Control panel	Capacitive touch screen	Buttons	Buttons	
Grease filter	2 stainless steel filters	2 (3) stainless steel filters	1 stainless steel filter	
Damper	—	—	—	
Electronic timer	—	—	—	
Fan speed	—	—	—	
Smoke limiter	○	○	○	
Sound attenuator box	○	—	—	
Duct casing	○ White	—	—	
Safera safety technology	○ Integrated also with an extinguisher	○	○	
Safety voltage	●	●	—	
Installation method	Between kitchen cabins/ on the wall	Between kitchen cabins	Between kitchen cabins	
Provision to control the damper with a separate switch	—	—	—	
Indicating signal for the damper position	—	—	—	

Multiapartment buildings

Apartment placed ventilation system



AHU + **GENIUS COOKER HOOD**

Centralized ventilation system



CENTRAL AHU + CHB + **CENTRAL COOKER HOOD**

Detached houses

Connected to ventilation



AHU + **GENIUS COOKER HOOD**

Connected to separate EC fan



AHU + ROOF FAN + **GENIUS COOKER HOOD**

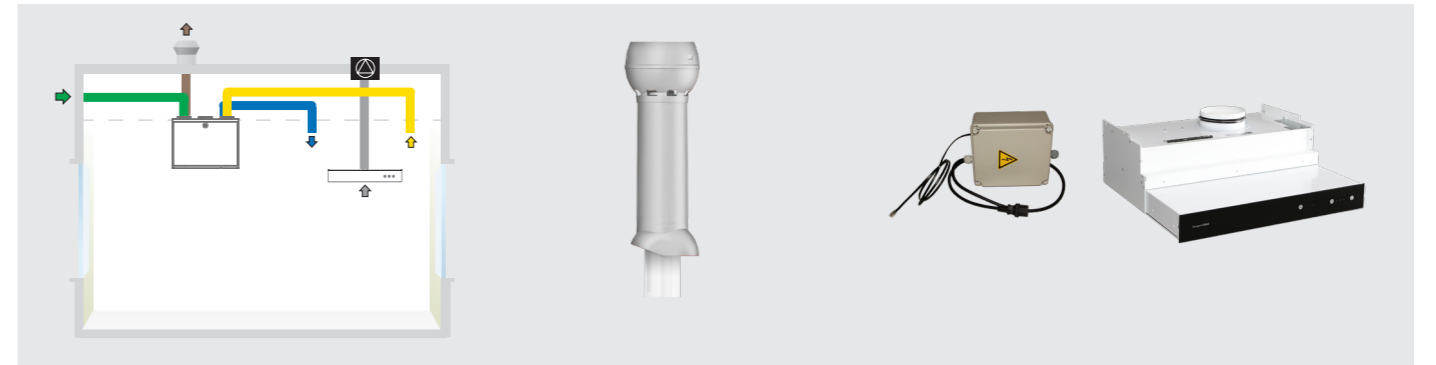
Renovation

Central extract ventilation



ROOF FAN + **FREEFLOW COOKER HOOD**

Connected to old AC fan



ITFC + **GENIUS COOKER HOOD**

Connected to old AC AHU



ITFC + **GENIUS COOKER HOOD**

Replace old kitchen exhaust fan



TWIST + GENIUS COOKER HOOD

Replace old kitchen ventilation unit



CASA R2/R3 + **JAZZ GENIUS COOKER HOOD**



Safera -stove guard

Available for Swegon Casa cooker hoods

Swegon CASA cooker hoods can be equipped with SAFERA stove guard. It helps to prevent typical cooking fires by preventing unsupervised use and disconnecting power from the stove.

Safera stove guards are based on an intelligent sensor system, thanks to which Safera quickly stops any hazardous situations without interfering with everyday cooking. A power control unit is placed in the stoves electric connection while the safety sensor is already preinstalled in the cooker hood or connected with instruction for easy installation in preset place under the hood. Also leak detection sensor is available as an accessory.



SAFERA
We sense what humans don't



Feel good **inside**



Swegon 