

TECHNICAL INFORMATION

APPLICATION	Silencer	
CONSTRUCTION	Shape	Rectangular
	Length	1200 mm
	Min. height	200 mm
	Max. height	600mm
	Min. width	200 mm
	Max. width	1200 mm
	Splitter thickness	100 mm
	Frame size	E30 (30 mm)
MATERIAL	Standard material	Galvanised steel
	Insulation	Mineral wool with black glass fibre veil
MOUNTING	Mounting options	None (to be provided by installer)

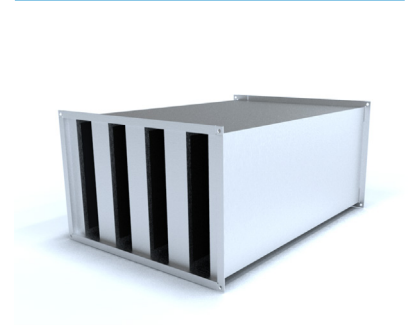
SELECTION TABLE

B x H (mm)	sound attenuation [dB]							
	63 Hz	125 Hz	250 Hz	500 Hz	1 kHz	2 kHz	4 kHz	8 kHz
200 x 200	2	4	13	22	32	30	22	18
400 x 200	2	4	13	22	32	30	22	18
600 x 200	2	6	19	28	37	36	29	27
800 x 200	2	5	17	26	35	34	27	24
1200 x 200	2	5	15	25	34	33	25	21
400 x 250	2	4	13	22	32	30	22	18
600 x 250	2	6	19	28	37	36	29	27
800 x 250	2	5	17	26	35	34	27	24
1200 x 250	2	5	15	25	34	33	25	21
400 x 300	2	4	13	22	32	30	22	18
600 x 300	2	6	19	28	37	36	29	27
800 x 300	2	5	17	26	35	34	27	24
1200 x 300	2	5	15	25	34	33	25	21
400 x 400	2	4	13	22	32	30	22	18
800 x 400	2	5	17	26	35	34	27	24
1200 x 400	2	5	15	25	34	33	25	21
600 x 500	2	6	19	28	37	36	29	27
800 x 500	2	5	17	26	35	34	27	24
1200 x 500	2	5	15	25	34	33	25	21
600 x 600	2	6	19	28	37	36	29	27
800 x 600	2	5	17	26	35	34	27	24
1200 x 600	2	5	15	25	34	33	25	21

USSIL

SQUARE DUCT SILENCER

Variations **USSIL**



Square galvanized duct silencer with baffles for installation in between ducts. The baffle consists of non-flammable mineral wool boards that absorb the acoustic energy. Its external surface is covered with a special glass fibre fabric that protects the mineral wool against abrasion from elevated air velocities up to 20 m/s. The baffle is rounded at the upstream side to minimize pressure loss and sound generation. If a higher noise attenuation is needed, multiple silencers can be mounted successively.



RECTANGULAR EXECUTION



SOUND FRIENDLY

SQUARE DUCT SILENCER

USSIL

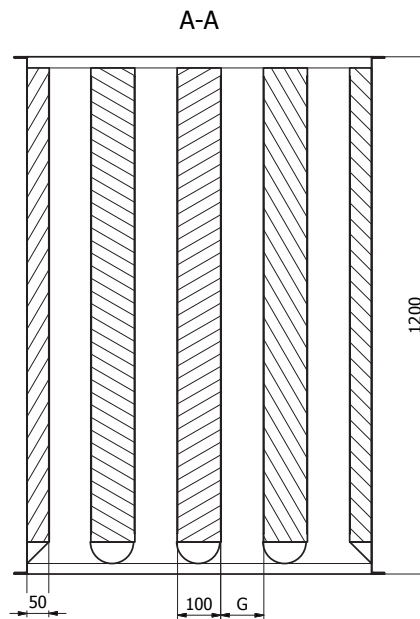
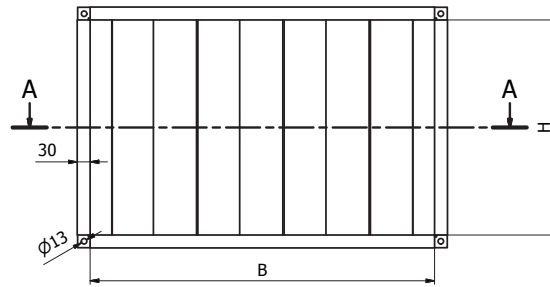
DRAWING

DIMENSIONS

B (mm)	G (mm)	# baffles (-)
200	100	1
300	50	2
400	100	2
500	100	3
600	67	4
700	100	4
800	75	5
900	100	5
1000	80	6
1100	100	6
1200	83	7

H [mm]: 200 $\xrightarrow{+50}$ 600
 B [mm]: H $\xrightarrow{+100}$ 1200

(H rounded to hundred)



HOW TO ORDER

U S S I L - - 0 6 0 0 0 2 0 0

