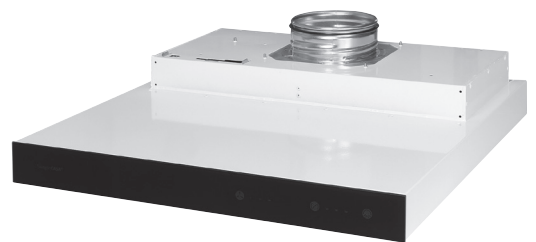




Cooker hoods

CASA SAMBA

A low cooker hood for modern kitchen



CASA Samba - low cooker hood

CASA Samba is a low cooker hood that fits into the modern kitchen. Together with your home's ventilation system, it guarantees fresh indoor air and energy-efficient, balanced ventilation in your home. Samba fits kitchen cabinets of all depths. The smooth surfaces and washproof metal grease filters are easy to keep clean. The lighting in the hood is made up of maintenance-free LED lights with adjustable brightness. The cooker hood with voltage protection (24 V) is equipped with a mains transformer – its power consumption is therefore low and the hood is always safe for the user. All electrical connections are located above the hood and are therefore quick and easy to connect during the installation phase. The hood is also fitted with a function for up to 10 hours of summer cooling, which can be easily selected on the hood.

The CASA Samba cooker hood can be combined with different types of ventilation system in blocks of flats, terraced houses and detached houses.

Control of ventilation units

A Smart ventilation unit can be controlled from the Samba cooker hood (remote/home/boosting). The ventilation unit automatically compensates for the air removed via the cooker hood, preventing low pressure from occurring unnecessarily in the home. The cooker hood has a high cooking odour capturing capacity and works effectively with low volumes of exhaust, which provides good compensation. It is possible to control an older AC ventilation unit using the ITFC transformer available as an accessory.

Control of roof fan

The Samba cooker hood can be used to directly control a modern EC roof fan. Older AC-operated roof fans can be controlled using the ITFC transformer available as an accessory.

Controlling the hood's fan unit/ house fan

The cooker hood can be used to directly control the very quiet Twist fan unit (TTEC). Twist can be used to replace the roof fans in small houses.

Centralised system in blocks of flats

The Samba Central models are suitable for centralised ventilation systems in blocks of flats. The hoods offer a damper status signal (potential-free) and an option to control the damper externally.

Control of various actuators

The cooker hood's balancing unit (CHB) makes it possible, via a terminal, to balance the negative pressure caused by the Central cooker hood's boosting and the general ventilation (basic air flow). In this way, excessive/harmful negative pressure inside the home is avoided.

Safera Safety stove guard

The Samba cooker hood can be equipped with the Safera Safety stove guard. The stove guard helps to protect against the usual kitchen accidents by preventing the cooker from being left unsupervised while in use and cutting the power if you forget to turn off the cooker. In the Safera models of Samba, the stove guard is preinstalled in the cooker hood and is attached to the cooker hood in the installation space. In addition to this, a power control unit that is approved for use (3-phase or 1-phase) is needed. Swegon also recommends installing a water leakage monitor (SA1).

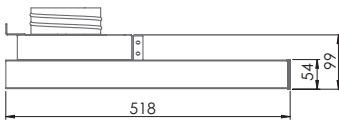
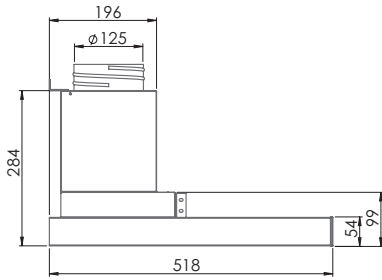
- 1 Good cooking odour capturing capacity with a low design cooker hood
- 2 Capacitive touch panel
- 3 Maintenance-free LED lighting, adjustable brightness
- 4 Installation in upper cabinets – also fits between/inside frames
- 5 Border colours: white, black, silver-coated and black glass
- 6 Widths 500 and 600 mm



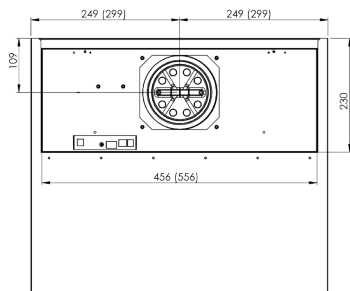
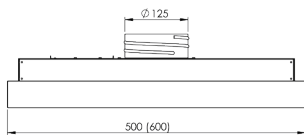
Technical data

Dimensions

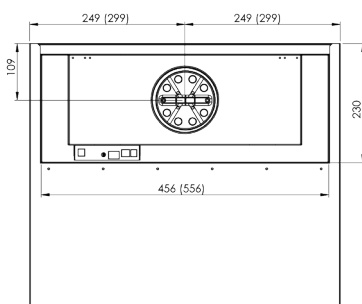
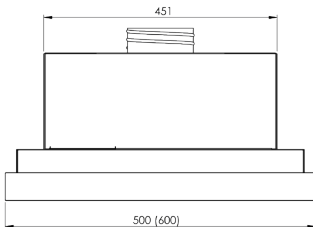
Samba (all models), side view



Samba Smart

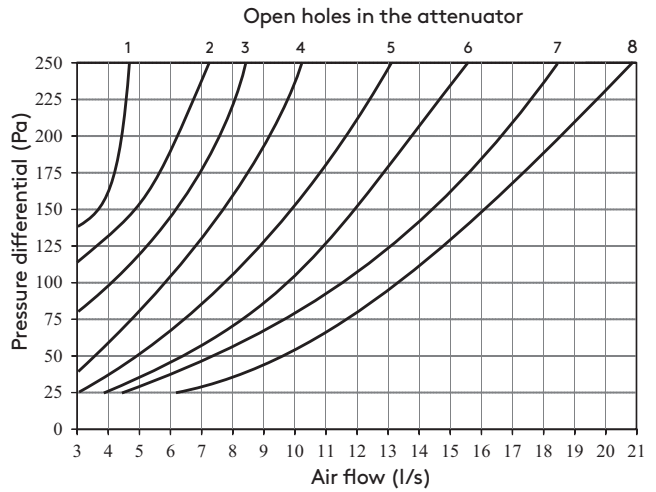


Samba Central CAVH silencer as standard

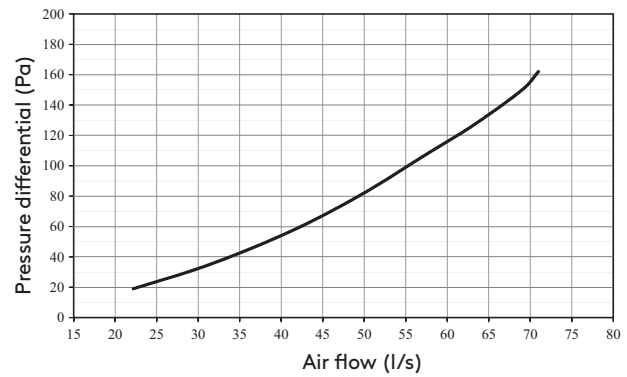


The distance of the grease filter from the edge of the hood is 20 mm.

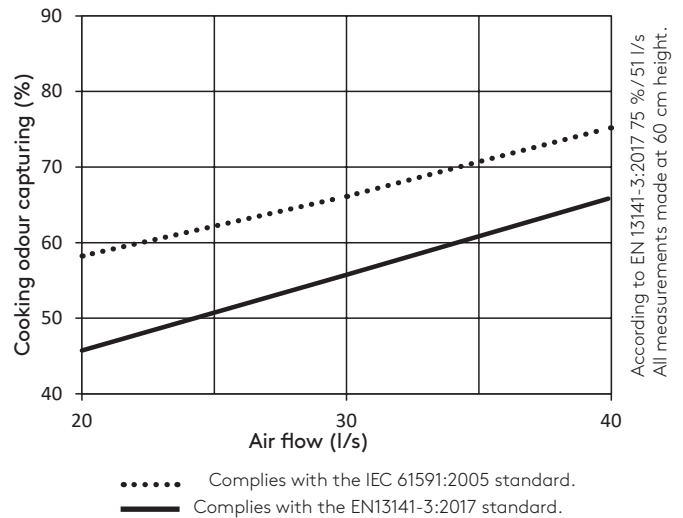
Basic ventilation



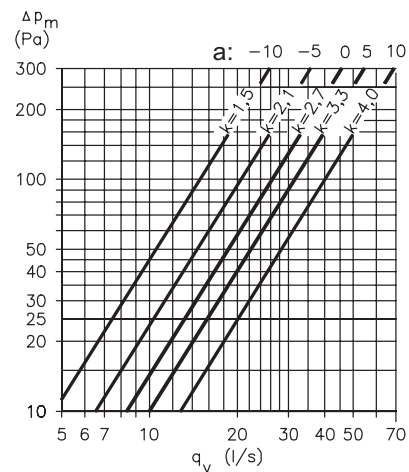
Boosted ventilation



Capacity for capturing cooking odours



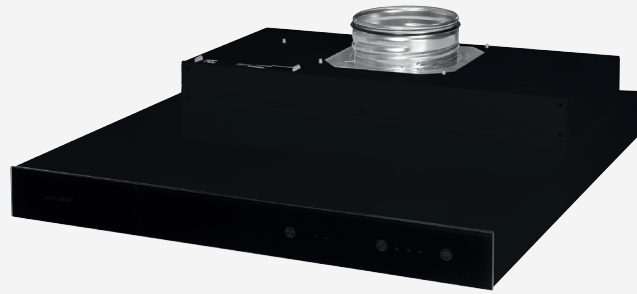
Boosted ventilation, Central





Colours

Black



Silver-coated



White (central)



Models

| | CASA SAMBA SMART | CASA SAMBA CENTRAL |
|--------------------------------------------------------|------------------------------------------------|------------------------------------------------|
| Compatible with | CASA ventilation unit | ● |
| | Centralised ventilation systems | — |
| | Centralised ventilation systems (Free Flow) | — |
| | EC external fan | ● |
| | AC external fan (and ventilation unit) | ○* |
| Width mm | 500/600 | 500/600 |
| Height of front panel mm | 52 | 52 |
| Depth mm | 518 | 518 |
| Electrical connection | Plug | Plug |
| Colour | White/silver/black | White/silver/black |
| Lighting | LED (4 000 K) | LED (4 000 K) |
| Control panel | Touch panel | Touch panel |
| Grease filter | 2 metal filters | 2 metal filters |
| Damper | ● | ● |
| Electronictimer | ● | ● |
| Fan speed | 3 speeds | — |
| Smoke extractor | — | ● |
| Silencer box | — | ● |
| Duct enclosure | — | — |
| Safera safety technology | ○ | ○ |
| Installation method | Next to a cupboard and between cupboard frames | Next to a cupboard and between cupboard frames |
| Safety voltage | ● | ● |
| Provision to control the damper with a separate switch | ● | ● |
| Indicating signal for the damper | ● | ● |

● Standard ○ Possible — Not possible

* ILVA transformer as accessory (ITFC)

CASA Samba cooker hood, product codes

| Code | Product | Code | Product |
|------------|-----------------------------------------|---------------|-----------------------------------------------------------------------|
| CSAVM5(S)* | Samba Central white/black glass 500 mm | PSAHM5(S)* | Samba Smart silver/black glass 500 mm |
| CSAVM6(S)* | Samba Central white/black glass 600 mm | PSAHM6(S)* | Samba Smart silver/black glass 600 mm |
| CSAMM5(S)* | Samba Central black/black glass 500 mm | ITFC | Transformer unit for AC control |
| CSAMM6(S)* | Samba Central black/black glass 600 mm | CHR | Auxiliary relay 230 V for controlling actuators / Safera alarm signal |
| CSAHM5(S)* | Samba Central silver/black glass 500 mm | 632039 | Safera power control unit 3-phase FI model |
| CSAHM6(S)* | Samba Central silver/black glass 600 mm | 632037 | Safera power control unit 1-phase FI model |
| PSAVM5(S)* | Samba Smart white/black glass 500 mm | 632040 | Safera power control unit 3-phase perilex SE model |
| PSAVM6(S)* | Samba Smart white/black glass 600 mm | 632038 | Safera power control unit 1-phase 25A SE/NO model |
| PSAMM5(S)* | Samba Smart black/black glass 500 mm | SA1 | Safera water leakage monitor |
| PSAMM6(S)* | Samba Smart black/black glass 600 mm | Power 24V 20W | Power supply SET/actuator |

Feel good **inside**

