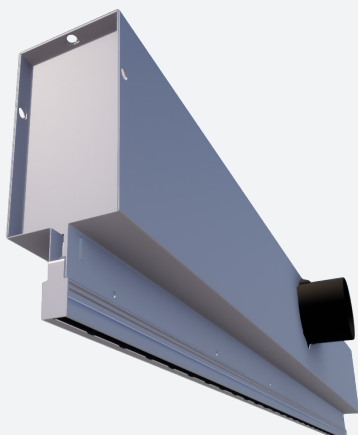


# LT151

## ALUMINIUM DRUM SLOT DIFFUSER WITHOUT FLANGE AND DIRECT MOUNTING



### VARIANTS

LT151, LT151S

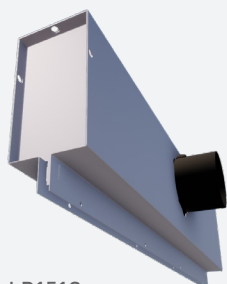
The drum slot diffuser is suitable for the supply and exhaust of cooled and heated air. This type is designed for installation in slat ceilings with narrow gaps between the slats. The slot is fitted with air direction elements which can be individually adjusted. These specially developed air direction elements (drums) ensure an ideal and stable air diffusion pattern as well as a low noise level. There is a high level of induction and air stream penetration in the room. All lengths are available.

Slot diffuser with adjustable polypropylene air nozzles (Drum length=150mm)

Only 15mm wide to mount between slats

Discrete installation

### ACCESSORIES



LP151S



### TECHNICAL INFORMATION

APPLICATION	Airflow direction	Lateral, left/right adjustable
	Airflow type	Linear, exhaust or supply
CONSTRUCTION	Shape	Linear
	Min. Length	300mm
	Max. length	2000mm
	Available steps in length	1mm
	Number of slots	1
	Slot width	15mm
	Installation depth	30mm
MATERIAL	Standard material	Extruded aluminium
	Standard finishing	Satin anodized 11µm
	Product finishing options	Powder coating RAL
	Drums	PP
MOUNTING	Mounting option	Fixed mounting on the plenum box LP151
PLENUM	Material	Galvanised (275g/m <sup>2</sup> ) steel sheet
	Optional insulation	Melamine 6mm
	Spigot	Spigot in PP
	Volume control	Optional perforated volume flow control disk inside the spigot
	Mounting options	Mounting eyes (Ø7mm) standard, mounting brackets available upon request

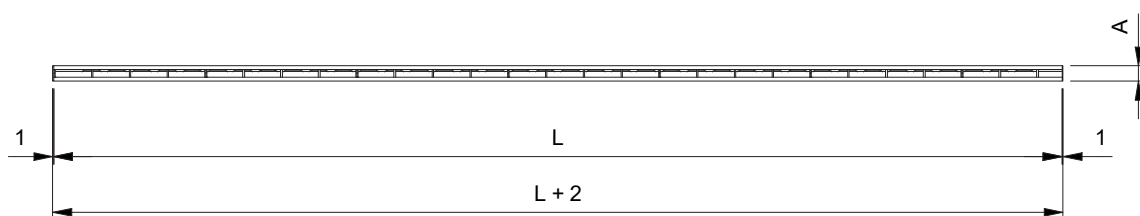
## PRODUCT KEY

LINEAR DRUM SLOT DIFFUSER LT151										
L	T	1	5	1	-	-	1	2	0	0
<p>Slot length L (mm): From 300 to 2000mm, per 1mm</p> <p>--: Naturel anodised F: Coated</p> <p>--: Standard E: End piece M: Intermediate piece</p> <p>1: 1 slot</p> <p>1: Dummy 5: Standard</p> <p>T: Supply - black air direction elements RAL9005 W: Supply - white air direction elements RAL9010 A: Exhaust - without air direction elements</p>										

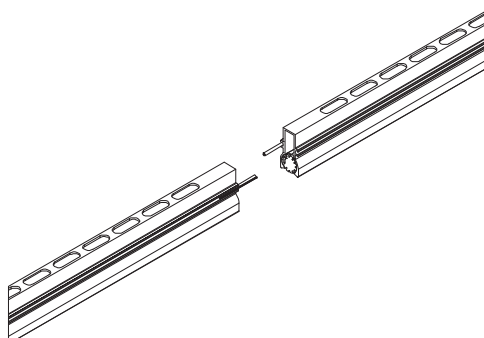
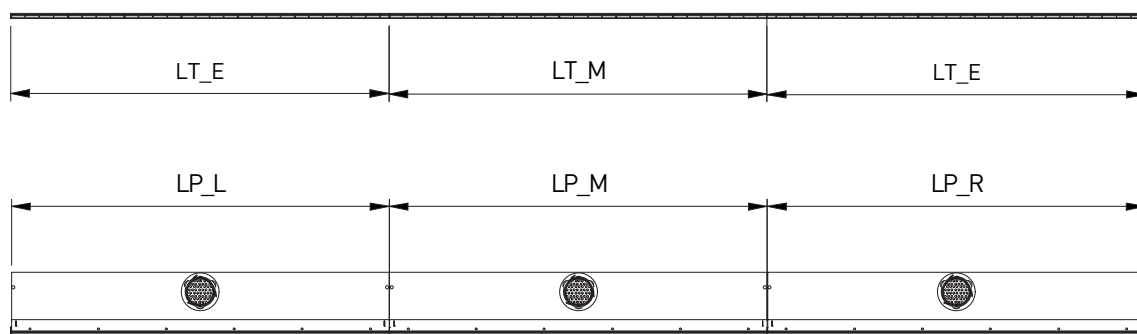
PLENUM LP151 FOR DIRECT MOUNTING																	
L	P	1	5	1	-	S	-	-	0	0	0	8	0	1	2	0	0
<div><div><div><div><div>Nominal diameter (mm): 80, 100 or 125</div><div>Slot length &lt;=1600: 1 diameter</div><div>Slot length&gt;=1601: 2 diameters</div></div><div><div>0: Without mounting straps</div><div>1: With mounting straps</div></div><div><div>- : Without damper</div><div>D : With damper</div></div><div><div>-: Non insulated plenum</div><div>G: Insulated plenum</div><div>H: Half insulated plenum</div></div><div>S: Side connection</div></div><div><div>-: Standard</div><div>L: End piece left (looking at plenum front into the inlet of the connection collar)</div><div>M: Intermediate piece</div><div>R: End piece right (looking at plenum front into the inlet of the connection collar)</div></div></div></div>																	

## PRODUCT KEY

LINEAR DRUM SLOT DIFFUSER LT151 MOUNTED ON PLENUM LP151 (DIRECT MOUNTING)														
L	T	1	5	1	-	-	S	-	-	0	1	2	0	0
											Slot length L (mm): From 300 to 2000mm, per 1mm			
											0: Without mounting straps 1: With mounting straps			
											-: Without damper D: With damper			
											-: Non insulated plenum G: Insulated plenum H: Half insulated plenum			
											S: Side connection			
											-: Naturel anodised F: Coated			
											-: Standard L: End piece left (looking at plenum front into the inlet of the connection collar) M: Intermediate piece R: End piece right (looking at plenum front into the inlet of the connection collar)			
											1: 1 slot			
											1: Dummy 5: Standard			
T: Supply - black air direction elements RAL9005 W: Supply - white air direction elements RAL9010 A: Exhaust - without air direction elements														



## LINEAR: END PIECES AND INTERMEDIATE PIECES



## DIMENSIONS

	LT151 + LP151
<b>A</b>	15
<b>C</b>	51
<b>ØD</b>	78
<b>H</b>	176
<b>H1</b>	125
<b>W</b>	70

All dimensions in mm

$L \leq 1600$ : 1 diameter  
 $L \geq 1601$ : 2 diameters

