

Application area

WISE IORE is a unit that can control products in Swegon's indoor climate system WISE that do not have integrated radio communication.

General

All relevant personnel must acquaint themselves with these instructions before beginning work. Any damages to the product or parts of it due to improper handling cannot be considered subject to warranty if this instruction has not been followed correctly. For further information about the WISE, see the relevant documentation at www.swegon.com

The packaging contains the following items:

- 1 x WISE IORE
- 1 x Instructions for use

Electrical safety

Only a qualified electrician or service personnel trained by Swegon are permitted to carry out any work on the electrical installation or connection of products to the system. Always follow local/national rules for who shall be permitted to carry out this type of electrical installation.

The 24 V isolation transformer must be connected in compliance with IEC 61558-1.

Installation

Check to make sure that the product does not have any visible defects.

Do not block the ventilation openings on the product.

Installed close to the product it should control, see figure 1.

The front-piece must be stored in its ESD packaging until it is to be mounted.

Mount the back-piece on a wall or in a junction box, see figure 4.

Connection of the power supply and accessories, see figure 4. When WISE IORE is supplied factory-fitted on a waterborne climate product, see the separate wiring instruction for each climate product.

Mount the front-piece on the back-piece, see figure 3b.

Check that the product and its cables are properly fitted in place after installation.

Use TuneWISE for commissioning. Commissioning must be performed by qualified and trained WISE service engineers.

Use

LED, permanent white light: the product is in pairing mode.

Trouble shooting

Make sure that the product is energized. Check that 24 V is available as set out in the Technical data section. Make sure that the glass fuse has not blown.

Cleaning

If necessary, use a dry cloth when cleaning. Never use water, detergent, cleaning solvent or a vacuum cleaner.

Service/maintenance

If you suspect that the product has some defect, please contact Swegon.

Disposal

Must be handled according to local regulations.

Warranty

The warranty or service agreement will not be in effect/will not be extended if: (1) The product is repaired, modified or changed, unless such repair, modification or change has been approved by Swegon AB; or (2) the serial number on the product has been made illegible or is missing.

LED - Explanation

Not paired

Energized
Selected in TuneWISE
Prepared to be added to the system
To be added to the system

Colour

White
White
White
White

Type

Permanent
Flashing, fast
Flashing, slowly
Flashing, fast for 5 s

Paired

Normal operation
Restart
Initiation
Air commissioning
Water commissioning
Commissioning air/water
Emergency mode
Service mode

Colour

Green
Blue
Blue
Orange
Violet
Orange/Violet
Green/Red
Blue

Type

Permanent
Permanent for 10 s
Flashing
Permanent
Permanent
Alternating
Alternating
Short flash every 5 s

Technical data

Power supply:	24 V AC \pm 10% 50-60 Hz, 15-30 V DC
Max. power consumption:	25 VA
Max. power output:	18 VA
Glass fuse:	Cartridge Fuses 250V 2A Time Lag (Slo-Blo)
Cable rating, connector:	Max. 1.5 mm ² , push-in spring force connection
Frequency band:	2.45 GHz, IMS band (2400--2483 MHz)
Output (ERP):	50 mW
Range of measurement	
Condensation:	Detection 500 kOhm, off at 900 kOhm
IP class:	IP20
Material:	Front-piece PC, Back-piece: PP
Colour:	Front-piece NCS S1002-Y, Back-piece: NCS S5500-N
Ambient temperature:	Operating: 0 – + 55 °C, Storage: -30 – +80 °C
RH:	10 – 95% non-condensing
Weight:	110 g
Dimensions:	W90 x H92 x D27 mm

Declaration of Conformity

Swegon AB hereby declares that the radio equipment WISE IORE conforms with the Directive 2014/53/EU and Directive 2011/65/EU.

The complete EU Declaration of Conformity is available at Swegon's website: www.swegon.com.

This declaration is applicable only if the product has been installed according to the instructions in this document and if no changes have been made on this product.

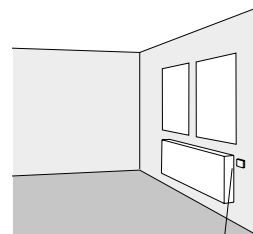


Figure 1. Recommended placement of WISE IORE when controlling radiators.

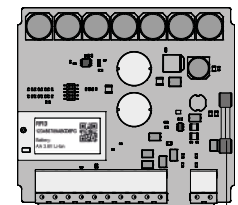


Figure 2. Circuit card. Glass fuse

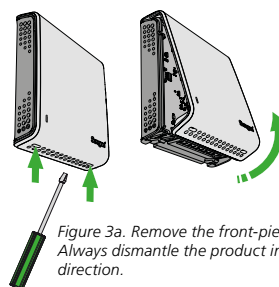


Figure 3a. Remove the front-piece. Always dismantle the product in this direction.

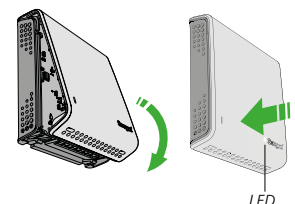


Figure 3b. Fit the front-piece. Always install the product in this direction.

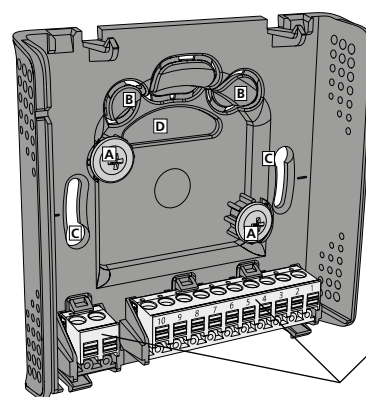


Figure 4. Back-piece
A. Screw mounting on the wall, screw max. \varnothing 4.5 mm, min. length 20 mm, screws not supplied.
B. Knock-outs for cable entry for wall mounting.
C. Hole for mounting in a junction box.
D. Opening for cable entry for mounting in a junction box.

<input type="checkbox"/>	<input type="checkbox"/>	10	9	8	7	6	5	4	3	2	1
24V IN AC/DC		CONDENSATION		GROUND		0-10V/DC		0-10V/DC		24V DC OUTPUT	
WISE IORE		CONDENSATION		GROUND		0-10V/DC		0-10V/DC		24V DC OUTPUT	
		IN		IN		OUT 2		OUT 1			
		DIGITAL		ANALOGUE							

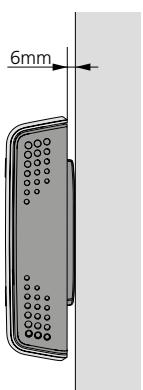


Figure 5. Wall mounting