

Application area

Room sensor with integrated radio transmitter, designed for use in Swegon's indoor climate system WISE. Sensor is available in 3 variants:

WISE IAQ Multi measures VOC, CO₂, RH and temperature

WISE IAQ CO₂ measures CO₂, RH and temperature

WISE IAQ VOC measures VOC, RH and temperature

General

All relevant personnel must acquaint themselves with these instructions before beginning work. Any damages to the product or parts of it due to improper handling cannot be considered subject to warranty if this instruction has not been followed correctly. For further information about the WISE, see the relevant documentation at www.swegon.com

The packaging contains the following items:

1 x Room sensor WISE IAQ

1 x Instructions for use

Electrical safety

Only a qualified electrician or service personnel trained by Swegon are permitted to carry out any work on the electrical installation or connection of products to the system. Always follow local/national rules for who shall be permitted to carry out this type of electrical installation.

The 24 V isolation transformer must be connected in compliance with IEC 61558-1.

Installation

Check to make sure that the product does not have any visible defects.

Do not block the ventilation openings on the product.

The room sensor should not be exposed to sunlight or draught.

Installed close to a door or middle of the wall, see figure 1.

The front-piece must be stored in its ESD packaging until it is to be mounted.

Mount the back-piece on a wall or in a junction box, see figure 4.

Connection of the power supply, see figure 4.

Mount the front-piece on the back-piece, see figure 3b.

Check that the product and its cables are properly fitted in place after installation.

Use TuneWISE for commissioning. Commissioning must be performed by qualified and trained WISE service engineers.

Use

LED, permanent white light: the product is in pairing mode.

Trouble shooting

Make sure that the product is energized. Check that 24 V is available as set out in the Technical data section.

Make sure that the glass fuse has not blown.

Cleaning

If necessary, use a dry cloth when cleaning. Never use water, detergent, cleaning solvent or a vacuum cleaner.

Service/maintenance

If you suspect that the product has some defect, please contact Swegon.

Disposal

Must be handled according to local regulations.

Warranty

The warranty or service agreement will not be in effect/will not be extended if: (1) The product is repaired, modified or changed, unless such repair, modification or change has been approved by Swegon AB; or (2) the serial number on the product has been made illegible or is missing.

Technical data

Power supply:	24 V AC ±10% 50-60 Hz, 15-30 V DC
Max. power consumption:	2 VA
Glass fuse:	250V 0.5A Time Lag (Slo-Blö)
Cable rating, connector:	Max. 1.5 mm ² , push-in spring force connection
Frequency band:	2.45 GHz, IMS band (2400--2483 MHz)
Output (ERP):	50 mW
Range of measurement	
Temperature:	0 – 50°C ± 0.5°C
RH:	20 – 80 rH% ±3%, 0 – 100 rH% ±5%
VOC:	450 – 2000 ppm
CO ₂ :	400 – 2000 ppm
IP class:	IP20
Material:	Front-piece: PC, Back-piece: PP
Colour:	Front-piece: NCS S1002-Y, Back-piece: NCS S5500-N
Ambient temperature:	Operating: 0 – + 55°C, Storage: -40 – +80°C
RH:	10 – 95% non-condensing
Weight:	95 g
Dimensions:	W90 x H92 x D25 mm

Declaration of Conformity

Swegon AB hereby declares that the radio equipment WISE IAQ conforms with the Directive 2014/53/EU and Directive 2011/65/EU.

The complete EU Declaration of Conformity is available at Swegon's website: www.swegon.com.

This declaration is applicable only if the product has been installed according to the instructions in this document and if no changes have been made on this product.

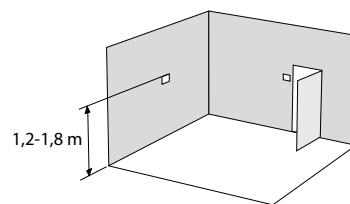


Figure 1. Recommended placement of WISE IAQ.

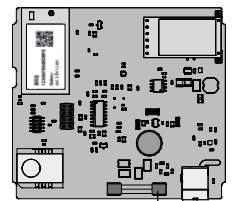


Figure 2. Circuit card. Glass fuse

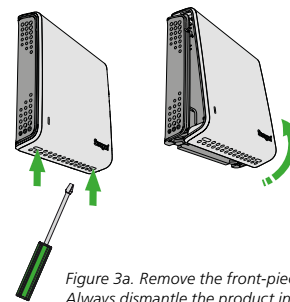


Figure 3a. Remove the front-piece. Always dismantle the product in this direction.

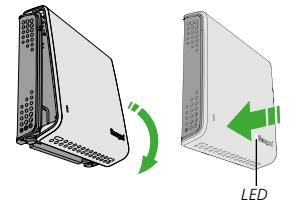
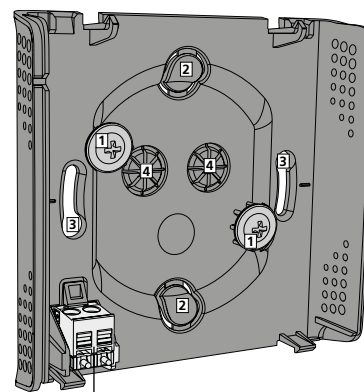
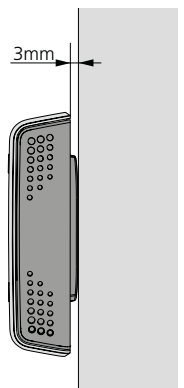


Figure 3b. Fit the front-piece. Always install the product in this direction.



Connection of the power supply
24 V AC/15-30 V DC



Wall mounting

Figure 4. Back-piece.

1. Screw mounting on the wall, screw max. Ø4.5 mm, min. length 20 mm, screws not supplied.

2. Knock-outs for cable entry for wall mounting.

3. Hole for mounting in a junction box.

4. Opening for cable entry for mounting in a junction box.