



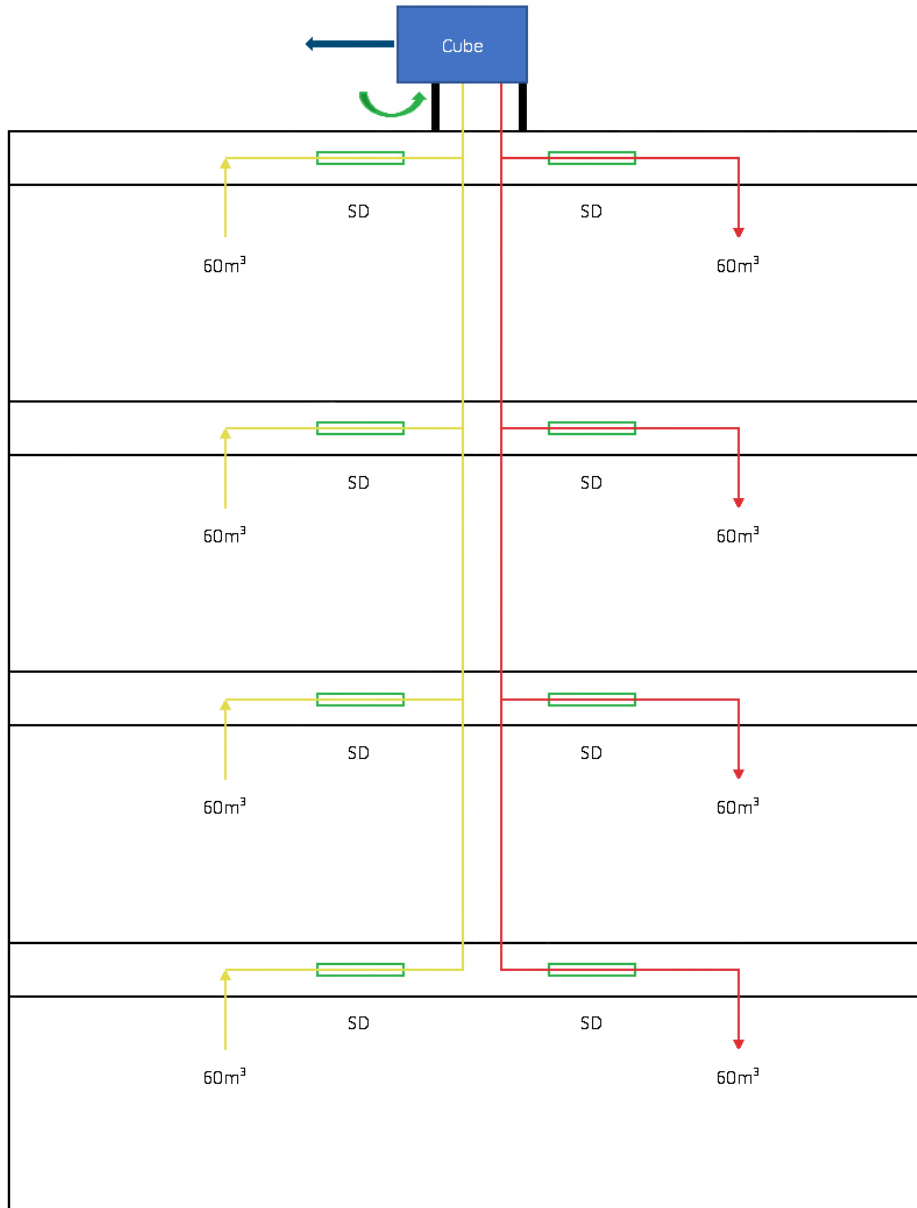
# CUBE Light

Do what is  
necessary

**SWISS+MADE**



**Swegon**



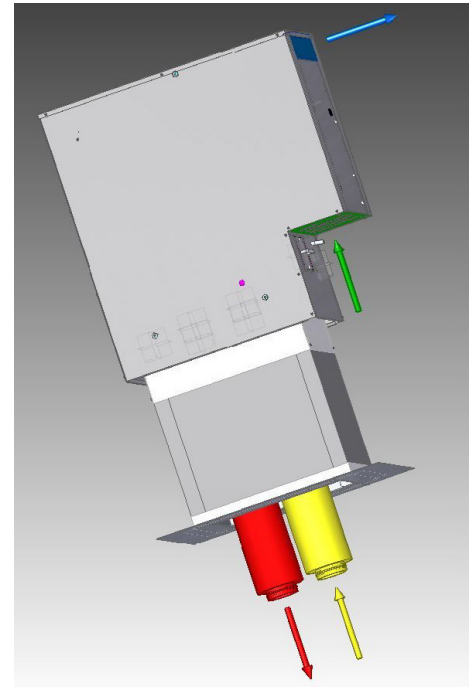
**ONE MODULE IS ENOUGH FOR 4 APARTMENTS  
MINIMAL INVESTMENT FOR MAXIMUM COMFORT**

# Do what is necessary

**DAS HERZSTÜCK DER KOMFORTLÜFTUNG IST DIE DACHZENTRALE CUBE.**

**SIE BEINHALTET ALLE FÜR DEN KOMFORTLÜFTUNGSBETRIEB NOTWENDIGEN KOMPONENTEN.**

Here is the fine dust filter, which filters even the smallest dirt particles and pollen from the outside air. The quiet EC centrifugal fans and the highly efficient heat exchanger ensure a quiet and economical ventilation operation



## Advantages

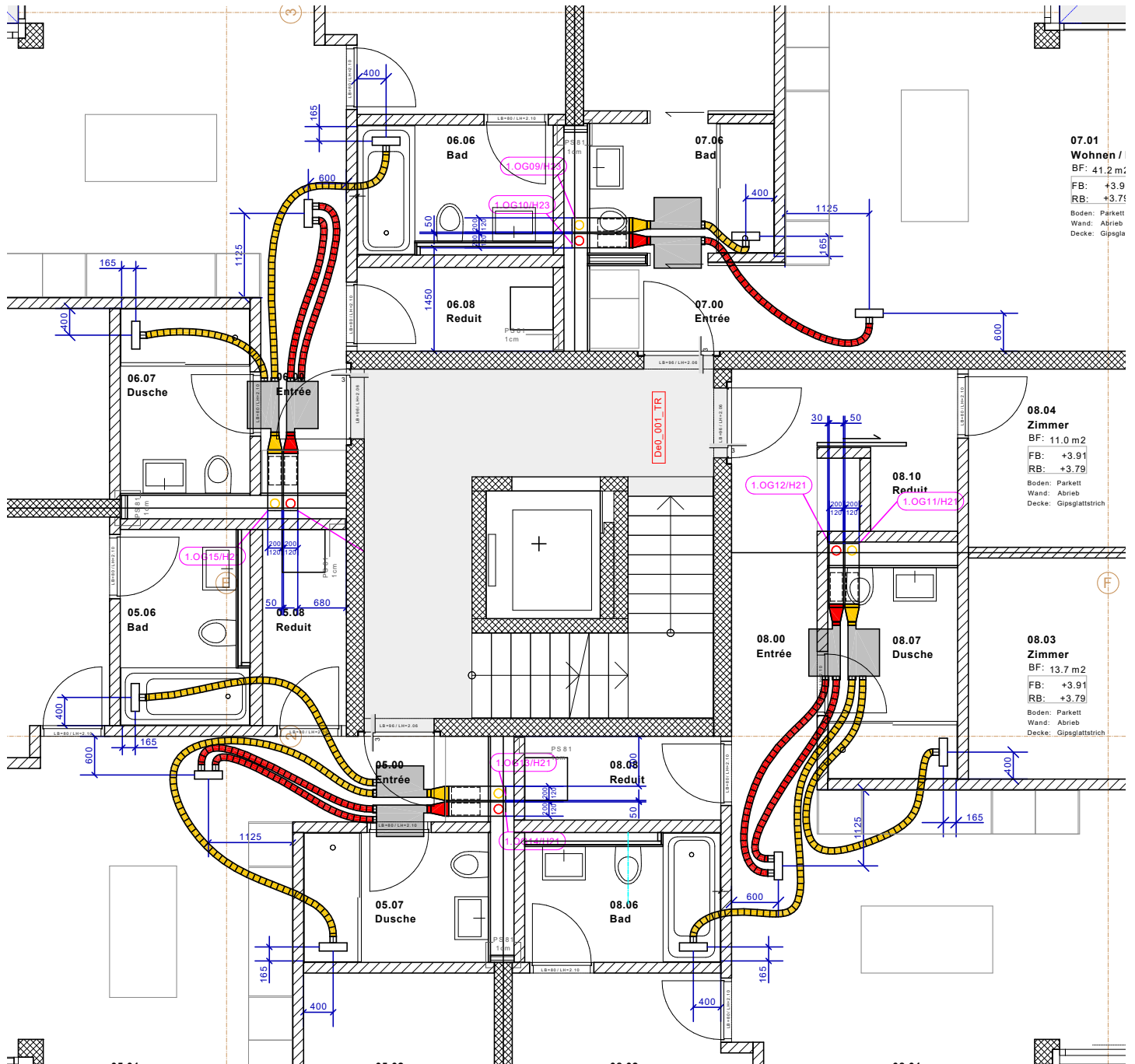
- Minimization of additional costs due to heat recovery
- No damage due to humidity
- no pollen
- Less noise in the house, because the windows can remain closed
- recirculation hood possible
- Good air quality despite the windows being closed



# CUBE in remodeling



# CUBE in new construction



**07.01 Wohnen /**  
 BF: 41.2 m<sup>2</sup>  
 FB: +3.9  
 RB: +3.7  
 Boden: Parkett  
 Wand: Abrieb  
 Decke: Gipsgla

**08.04 Zimmer**  
 BF: 11.0 m<sup>2</sup>  
 FB: +3.91  
 RB: +3.79  
 Boden: Parkett  
 Wand: Abrieb  
 Decke: Gipsglattstrich

**08.03 Zimmer**  
 BF: 13.7 m<sup>2</sup>  
 FB: +3.91  
 RB: +3.79  
 Boden: Parkett  
 Wand: Abrieb  
 Decke: Gipsglattstrich



## **BERN**

Swegon AG  
Kernenriedstasse 1  
CH-3421 Lyssach

## **ZÜRICH**

Swegon AG  
Grindelstrasse 6  
CH-8304 Wallisellen

## **LAUSANNE**

Swegon SA  
Route de Prilly 23  
CH-1023 Crissier

## **LUGANO**

Swegon SA  
Via Cantonale 2B  
CH-6928 Manno

Tel. +41 842 000 017 | [www.swegon.ch](http://www.swegon.ch) | [info@swegon.ch](mailto:info@swegon.ch)

**Swegon**