

GLOBAL RX

High efficiency double flow ventilation unit with high efficiency heat recovery

DISSASSEMBLY/ASSEMBLY MANUAL



MAIN TOOLS



- Drilling machine
- Screw machine
- Socket of 7 mm and 8mm
- Torx tx30 screw bit
- Drill of 4,2mm
- Flat and cross-headed screwdriver
- Plastic clamp ring
- Wire cutter

1. WITHDRAW DOORS AND PANELS (SEE STEP 2 FOR CONTROL BOX PANEL BEFORE!)



1

1. First, withdraw the s
2. Unclip the black hinges
Note: Once the doors ar
together the clips of the h
3. Advise: put numbers on the
and profilings for refe



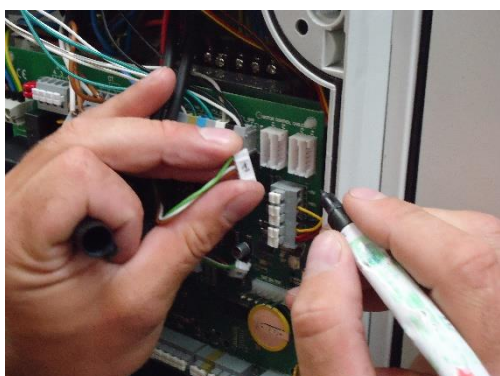
2. CONTROLS

For this step, **please let the door with the control box attached to the device.**

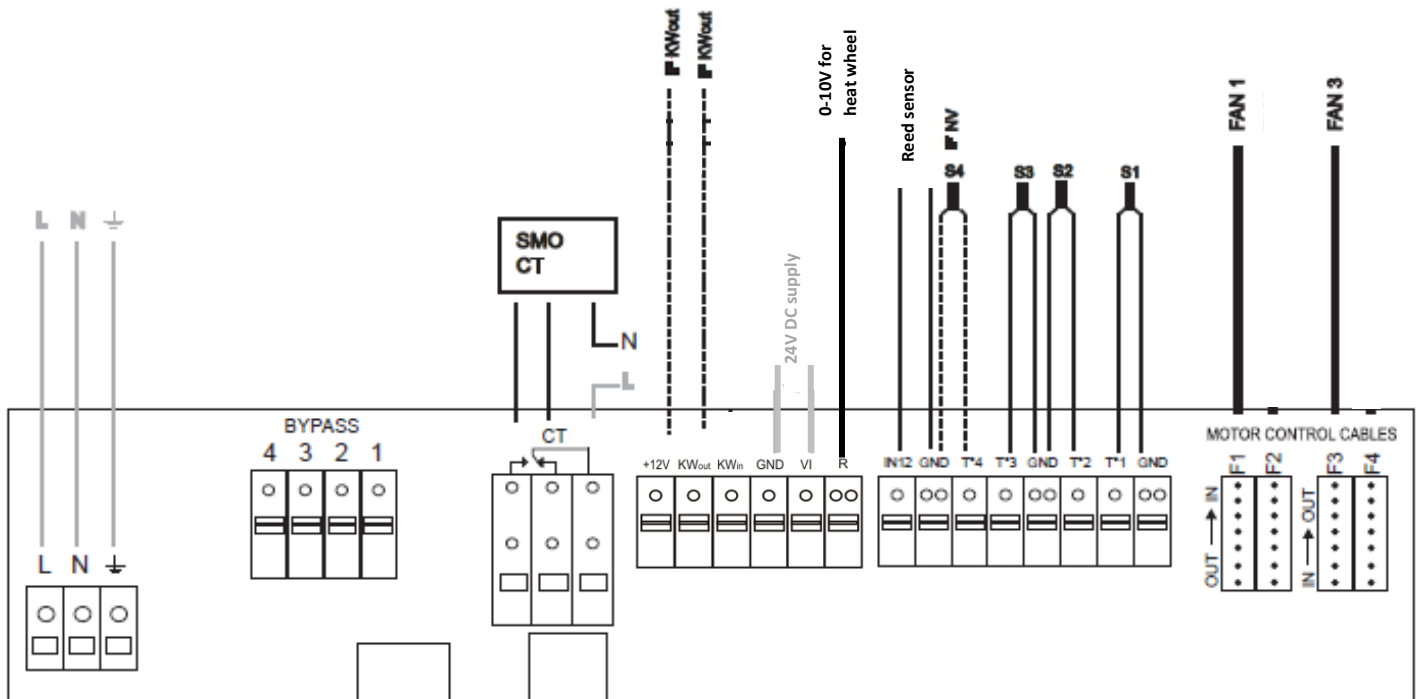


Take off the 4 plastic screws with a flat screwdriver.

Unplug control cables of the fans (F1, F3), temperature sensors (T1, T2, T3), eventual kit CA cables (PR1, PR2, 12V, GND) and the eventual other option cables.

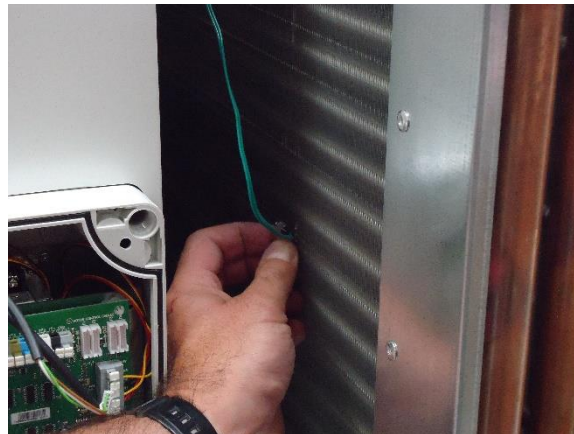
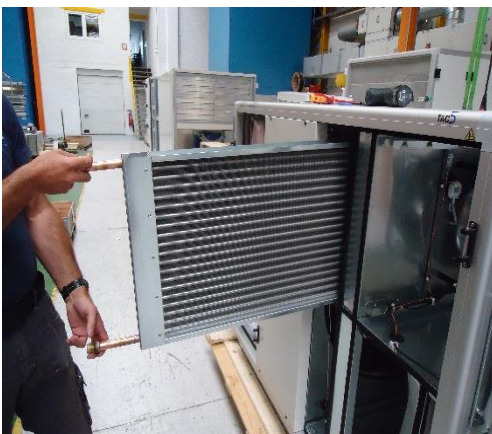


Advise: put numbers on the control cables (F1, F1, F3), sensor tubes (T1, T2, T3), and on the eventual option cables.



————— CABLES TO BE REMOVED
 - - - - - EVENTUAL CABLES TO BE REMOVED (OPTIONS)
 ————— REMAINING CABLES

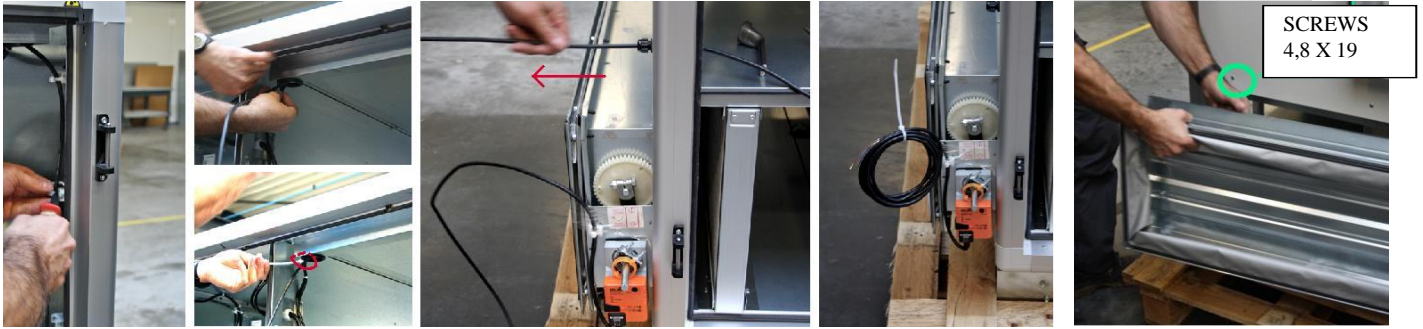
3. IN CASE OF KWOUT OR NV OPTION: REMOVE THE POST-HEAT BATTERY.



4. REMOVE THE FILTERS (UNTIGHT THEM BY MOVING THE SLIDING PARTS)

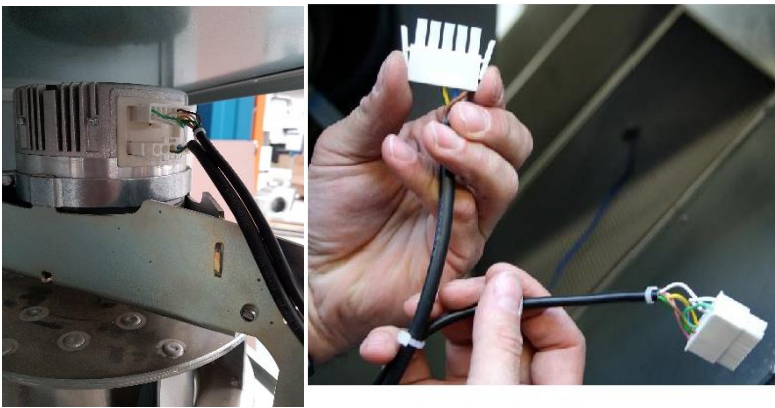


5. IF OPTION « CT IN »: REMOVE THE CABLES OF THE SERVO-MOTOR AND WITHDRAW FLAP VALVES

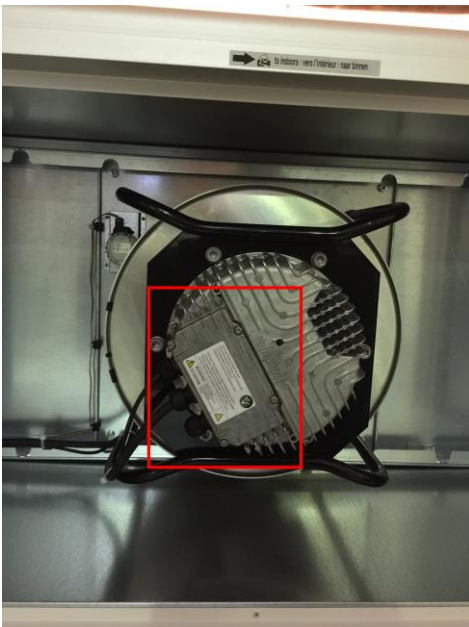


6. DISCONNECT THE FANS CABLES

GLOBAL RX 2000:



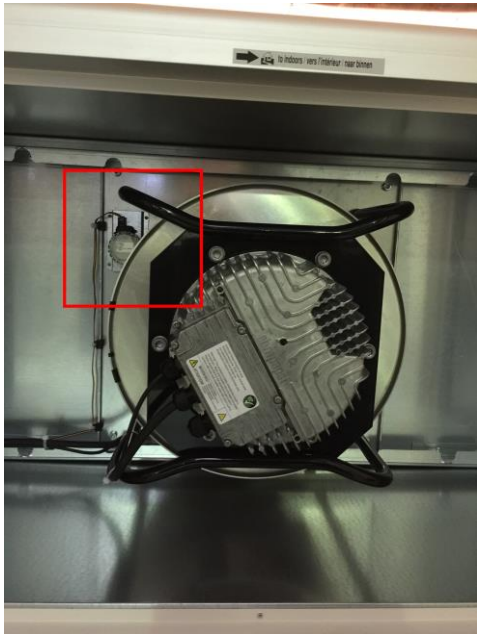
GLOBAL RX 4000:



1. Remove the 4 screws of the motor control cover.
2. Remove the power and control cables.

Advise: mark each wire of the control cable to replace them at the right place for the re-wiring.

7. IF OPTION KIT CA: DISCONNECT ELECTRIC WIRES FROM PRESSURE SENSOR



8. UNMOUNT THE TWO FANS

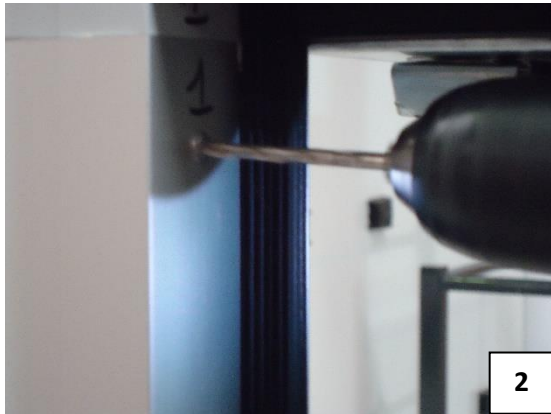
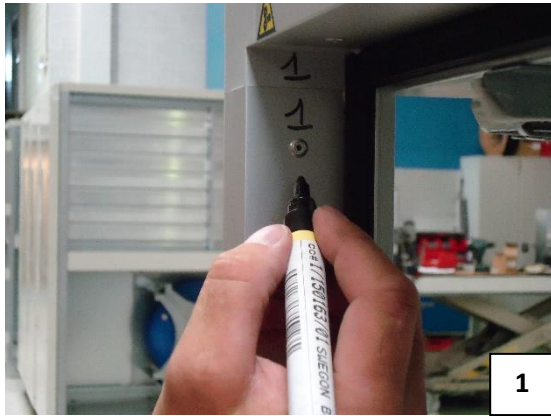


1. Remove the 4 screws on each fan supporting plate
2. Remove the fans together with the supporting plate

9. IF MS OPTION: REMOVE THE FLEXIBLES SLEEVE



10. UNMOUNT THE ROOF OF THE UNIT



1. In order to remount correctly each vertical uprights with his respective plastic corner for the re-assembly afterwards, put numbers for reference
2. Drill the rivets located on the vertical uprights, on each corner
3. Remove screws fixing the vertical plate support of supply fan on the roof
4. To make the removing easier, first use a hammer to start the disassembly of the roof on the 4 corners
5. Remove the entire roof

11. REMOVE THE HEAT WHEEL BY SLIDING IT OUT OF THE UNIT



12. REMOVE THE 2 REMAINING INSIDE PARTS



1. Exhaust fan side : remove the screws fixing the vertical plate support of the exhaust fan on the bottom of the unit
2. Remove the vertical plate support of the exhaust fan together with the horizontal separation metal sheet and the vertical uprights.
Make sure that rivets fixing vertical uprights on the bottom plastic corners have been removed!
3. Supply fan side : remove the screws fixing the vertical supports of the horizontal separation metal sheet on the bottom of the unit
4. Same as step 2.

NOTICE

To re-assembly the unit afterwards, follow the disassembly steps in reverse.

Be careful to ensure a good sealing by using silicone.

The silicone must be applied onto the surface in order to create impermeability amongst the parts.

The silicone's location is underlined in red in the view here after and at the next page. The application of silicone has to be made throughout the assembly of the device.

